



HYDRAULIC SCREW-IN VALVES PRESSURE REDUCING-ADJUSTABLE

RO-78/* 60 l/min 42 MPa (420 bar)

1 DESCRIPTION

Pressure reducing-relief valve in cartridge style with 7/8"-14 UNF industrial common cavity, direct acting, spool type for improved stability throughout flow range. Thanks to the low hysteresis of the valve the response to dynamic pressure changes is rapid and reliable. Body is designed for an accurate pressure control with a limited pressure drop. The valves also acts as a relief valve in case of pressure peaks or shocks in the downstream line. Standard version of the valve is zinc coated (240h salt spray test) with possibility of Zinc Nickel coating for improved corrosion resistance (520h salt spray).



2 ORDERING CODE

(1)	(2)	(3)	(4)	(5)
RO	- 78	/	-	-

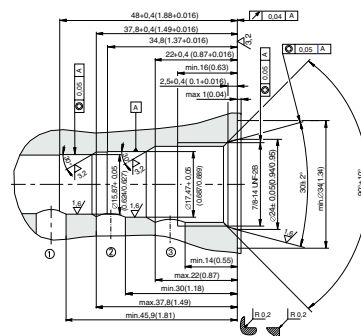
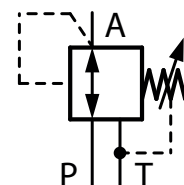
(1) RO: Direct acting pressure reducing-relieving valve

(2) Nominal size
78: 7/8"-14 UNF Cavity

(3) Reduced pressure ranges
 - 3: 1,0 - 3,0 MPa (10-30 bar)
 - 6,3: 2,0 - 8,0 MPa (20 - 80 bar)
 - 11: 3,0 - 11,0 MPa (30 - 110 bar)
 - 16: 4,0 - 15,0 MPa (40 - 150 bar)

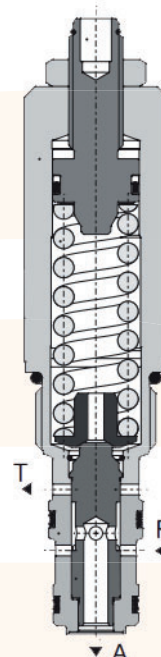
(4) seals
 - no designation: NBR seals
 - V: Viton seals

(5) Coating
 - no designation: zinc - trivalent coating
 - ZN: zinc - nickel (520 h)

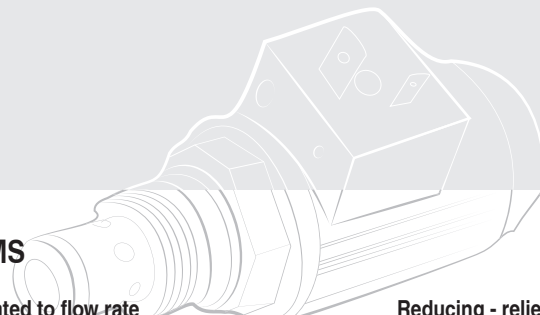


3 TECHNICAL DATA

Maximum flow	60 l/min
Maximum pressure	42 MPa (420 bar)
Mass	0,26 Kg



4 TYPICAL DIAGRAMS

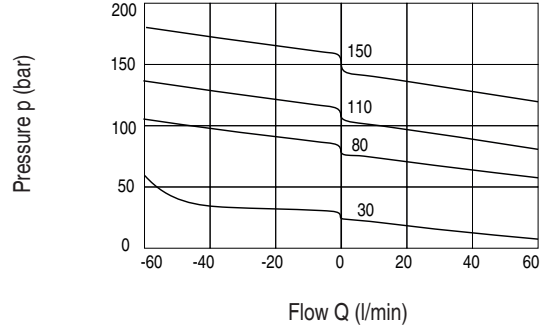
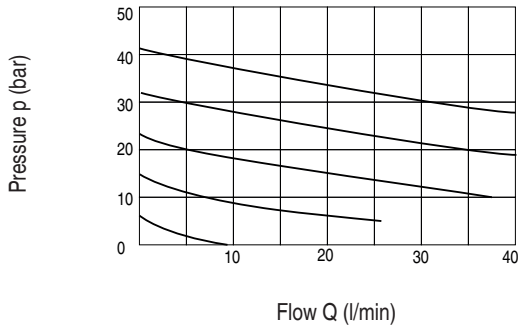


Minimum reducing pressure related to flow rate

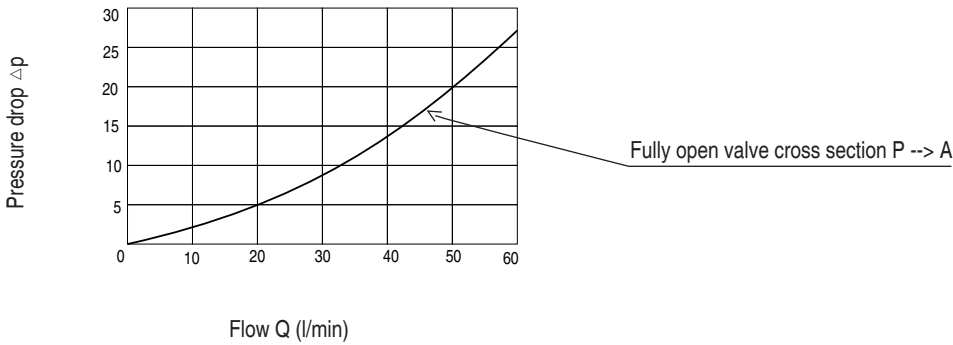
Reducing - relieving pressure related to flow rate

Pressure range 3

Relieving function A --> T / Reducing function P --> A



Pressure drop related to flow rate



5 INSTALLATION DIMENSIONS

