

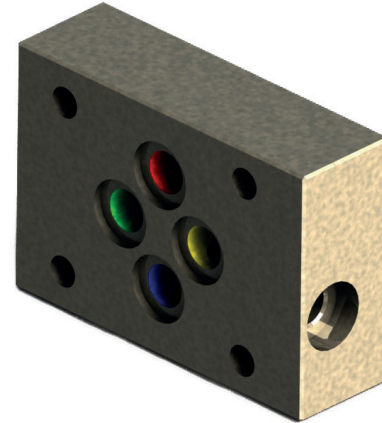
SANDWICH PLATE CETOP 3

PT3

60 l/min - 32 MPa (320 bar)

1 DESCRIPTION

Sandwich plate made of machined cast iron with phosphate coating with CETOP 3 standard mounting interface for vertical modular stacking. This plate serves as a closing plate in "O" version or as a direct connection between P/T and A/B port depending on the version



2 ORDERING CODE

(1)	(2)	(3)
PT3	-	/ 20

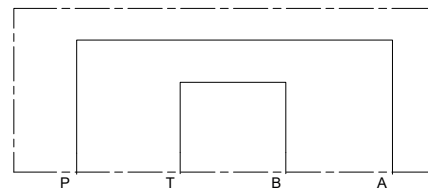
(1) PT3: CETOP03 plate

(2) Versions:

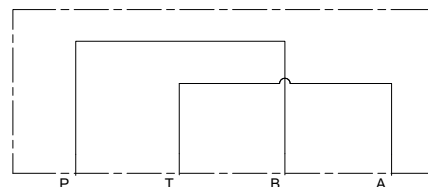
0: closing plate
 PA/BT: P in A and B in T
 PB/AT: P in B and A in T

(3) progressive of the valve

PT3-PA-BT

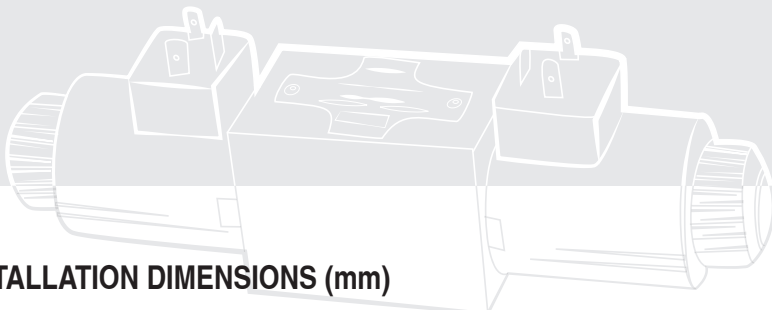


PT3-PB-AT

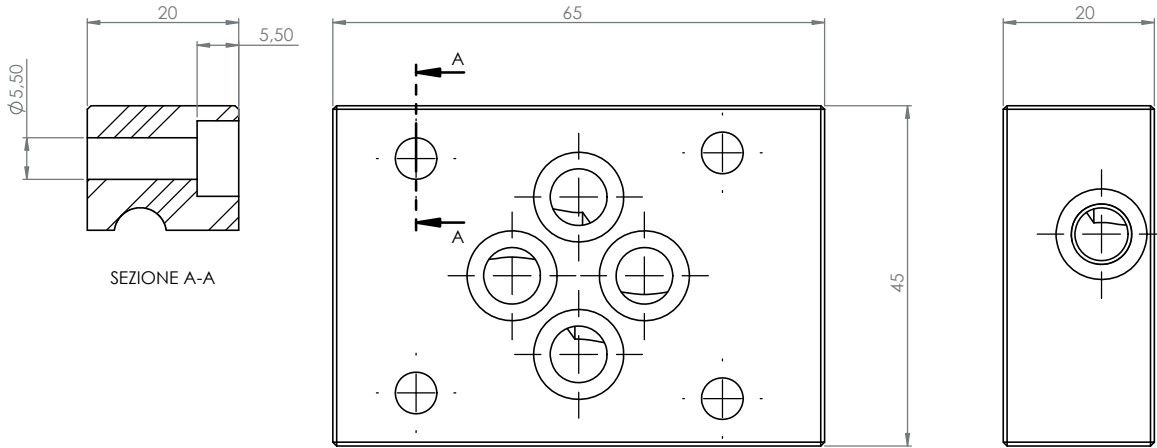


3 TECHNICAL DATA

Material:	Cast Iron GG 25
Coating:	Manganese phosphating
Max pressure on T port	320 bar
Incoming flow, maximum recommended:	60l/min
Mass	1,1 kg
A and B ports:	Standard G1/4" with min surface rugosity of Ra 1.6



4 INSTALLATION DIMENSIONS (mm)



5 HYDRAULIC FLUID

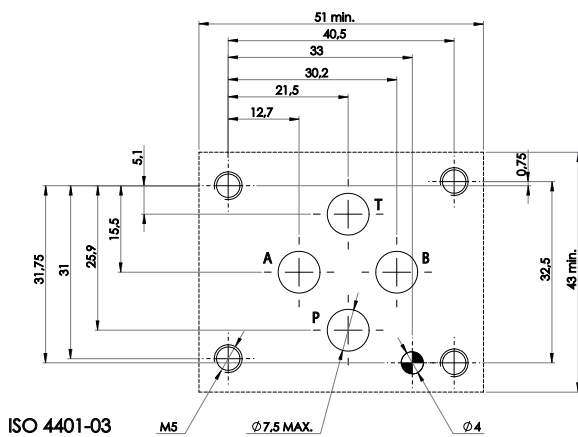
Seals and materials used on standard valves PT3-⁺ are fully compatible with hydraulic fluids of mineral oil base, upgraded with antifoaming and antioxidantizing agents. The hydraulic fluid must be kept clean and filtered to ISO 4406 class 19/17/14, or better, and used in a recommended viscosity range from 10 cSt to 60 cSt

6 MOUNTING SURFACE OF THE VALVE:

Planarity of the surface: 0,01/100

Rugosity: Ra 0,8

Every section has a mounting surface according to ISO 4401-03.



ISO 4401-03

M5

7.5 MAX.

4