

MONOBLOCK SINGLE SECTION ISO 05 - BOTTOM PORTS

MRSK-5

100 l/min 30 MPa (300 bar)

1 DESCRIPTION

MRSK-5 is a basic CETOP 5 baseplate useful for the connection of a single cetop section with A, B, P, T ports which are located in the bottom. The plate is in cast iron phosphate coated.

2 ORDERING CODE

(1)	(2)	(3)
MRSK	- 5	-

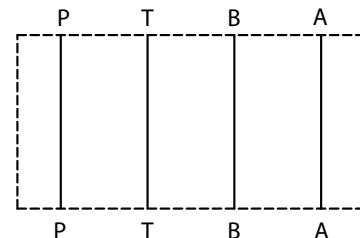
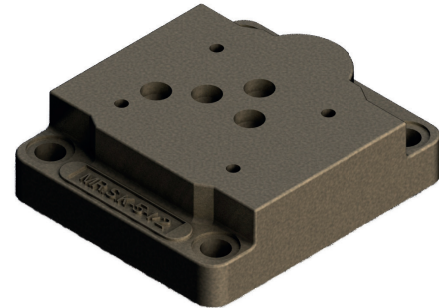
(1) MRSK: Base plate single section and bottom ports

(2) 5: CETOP 05: size 12 with G 1/2" threads

(3) size:

12: ports with G 1/2" threads

34: ports with G 3/4" threads



3 TECHNICAL DATA

Material:	Cast Iron
Coating	Phosphated
Max pressure	30 MPa (300 bar)
Max flow rate	100 l/min (1/2") 120 l/min (3/4")
Mass	1,90 kg (1/2") 1,70 kg (3/4")

Stations	X	A	B	C	D	E
1/2"	32	10	70	23	47.5	73
3/4"	31	9	71	21	48	75

4 INSTALLATION DIMENSIONS

