

HYDRAULIC SCREW-IN VALVES proof II 2 GD, Ex db IIC T5 Gb & Ex tb IIIC T100 °C Db

EVX-*-C5/25 25 l/min 25 MPa (250 bar)

1 DESCRIPTION

Valves EVX-*-C5 are ATEX directional control valve in cartridge style poppet type. It is suitable for 2 way metric cavity M22 x 1,5 or cavity SAE 08 . The valve is available with ATEX metallic DC and AC solenoids. The coil is Zinc-nichel coated for an enhanced surface protection (ISO 9227, 520 h salt spray).

Protection according to IEC 144: Class IP67- External surfaces zinc-nichel coated (min. thickness 7 micron)

Connection: 3,5 mm² wire cable (CEI 20-22), length 3 m already connected to coil. Electrical connection must be accordance to Ex-proof norm ATEX. Earth connection both internal, with yellow-green wire in the cable, and external with a minimum 4mm² cable fastened to earth screw.

2 ORDERING CODE

(1)	(2)	(3)	(4)	(5)	(6)
EVX	-	-	C5	-	/ 25



(1) EVX: Ex-proof solenoid operated screw-in poppet valve

(2) Size:

06: metric cavity M22x1,5 See [5](#)

34: SAE 08 cavity 3/4" 16 UNF See [5](#)

(3) C5: two way type

(4) Coils:

012C: 12V DC-0,92A

024C: 24V DC-0,46A

115A: 115V AC-0,10A

230A: 230V AC-0,05A

(5) Cable length :

no designation: standard 3m cable

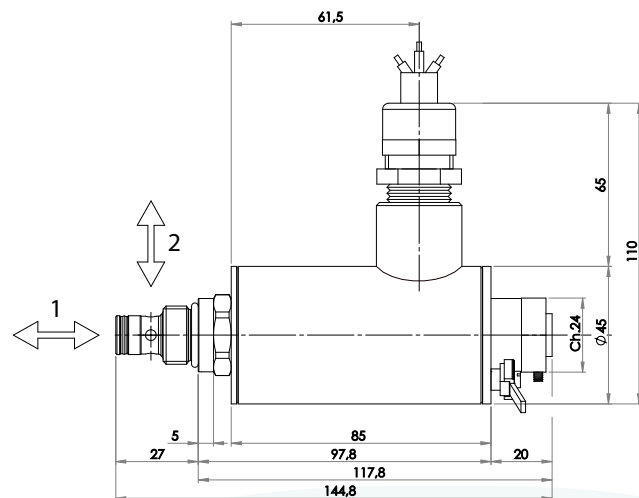
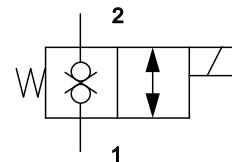
5: 5m

10: 10m

16: 16m

20: 20m

(6) /25: Design number of the valves ATEX solenoid for G and D

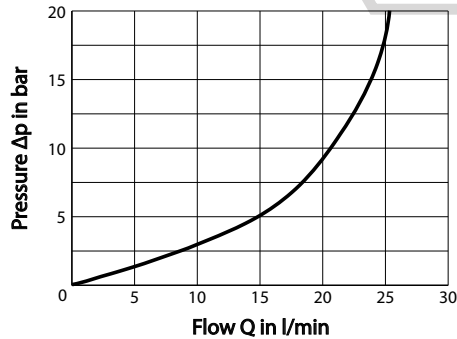


3 TECHNICAL DATA

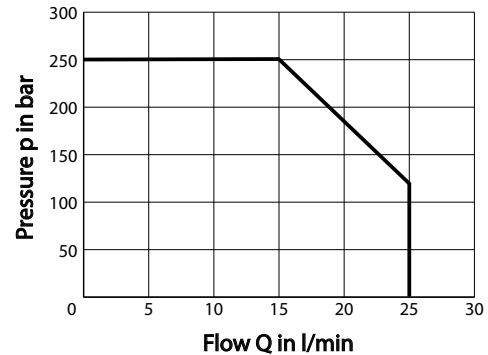
Suitable for standard cavity:	M22 x 1,5 or SAE 08
Solenoids according to ATEX 94/9/CE and conform to EN 50281-1-1	
ATEX code/class:	II 2 GD Ex d III C T5
Certificate:	INERIS 05ATEX0028X/02
Max. operating pressure:	250 bar
Max. flow rate:	25 l/min
Duty cycle:	100%
Materials:	Steel body, poppet in tempered and grinded steel
Mass	1,40 kg (coil included)

4 TYPICAL DIAGRAMS

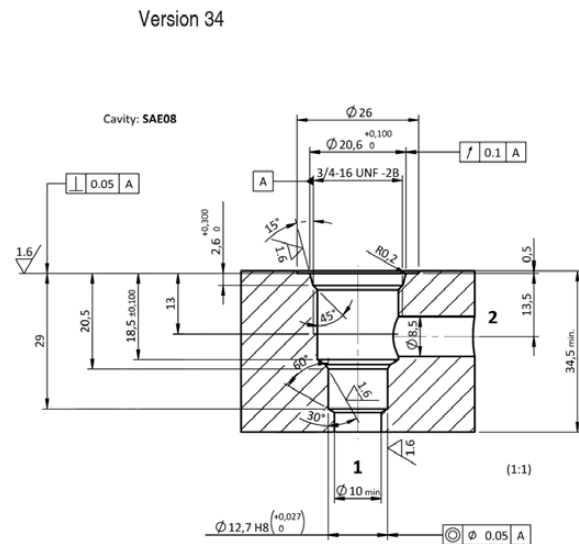
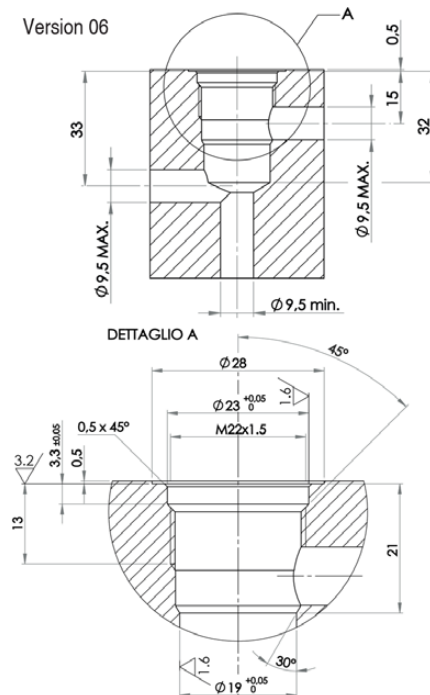
Typical Δp -Q curves for valves EVX-*-C5 in standard configuration, with mineral oil at 26 cSt and 50 °C



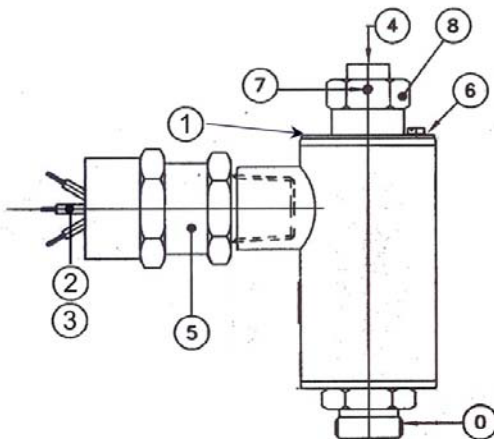
Typical p-Q curves of operating limits for maximum hydraulic power transferred by valves EVX-*-C5



5 INSTALLATION DIMENSIONS (mm)



6 EXPLOSION PROOF SOLENOID GMA-6/HD SERIES 271 GD



Atex Certificates :
INERIS 05ATEX0028X/02 for Gas and Dust

0: Ex proof solenoid according to ATEX 94/9/EC.

II 2GD Ex db IIC T5 Gb, Ex tb IIIC T100 °C Db IP66/67.

Solenoid outside surfaces are zinc-nickel plated, with 7 μ m minimum thickness
1: Solenoid label indicates supply voltage, protection class Ex d, certification number by INERIS and maximum absorbed power.

2: 3-wires cable, according to CEI 20-22, of standard length of 3 m, is fastened to the coil and locked by cable gland.

3: Wires have 1,5 mm² section; earth connection wire is green-yellow. Electric connection must be in accordance with Ex-proof norm ATEX.

4: Manual override operation is by pushing the extended pin.

5: Normalised cable gland –torque 8 Nm \pm 1 – device has threaded attachment 1/2" conical – ISO 7/1

6: Earth connection screw

7: Threaded plug (socket hexagon 1,5 mm) to lock the retaining coil nut

8: Nut for retaining the coil –torque 6 Nm \pm 1 – hexagon 24 mm.

Conformity of unit to the norms is not granted if coil is used separately from its electromagnetic tube.