



## HYDRAULIC SCREW-IN FLOW CONTROL VALVES- PRESSURE COMPENSATED VQF

12 l/min 25 MPa (250 bar)

### 1 DESCRIPTION

2-way pressure compensated flow control valve Suitable for standard cavity 3/4" 16 UNF Not adjustable type: available in different fixed delivery rates (from 1 to 12 l/min – accuracy:  $\pm 10\%$  at 100 bar) Maximum operating pressure: 250 bar Reverse flow through the same regulating orifice, without pressure compensation.

Steel body.

Poppet in hardened and grinded steel.

### 2 ORDERING CODE

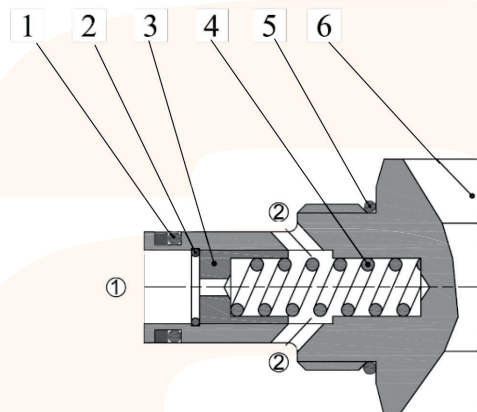
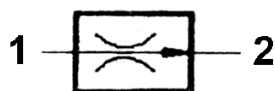
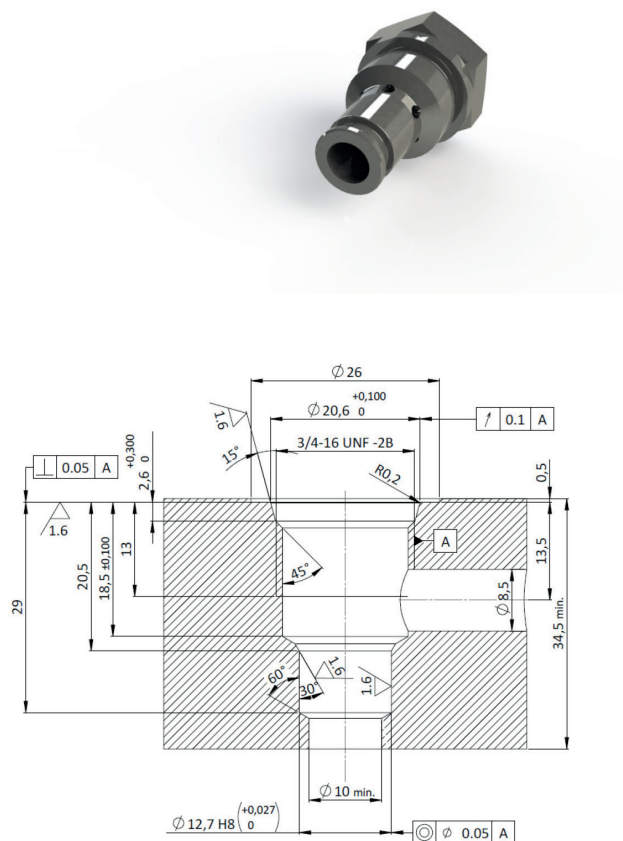
(1)	(2)	(3)
VQF	- 34	/

(1) VQF: Pressure compensated flow control valve

(2) 34: Nominal size

(3) Flow rate:

1-1 l/min  
2-2 l/min  
3-3 l/min  
4-4 l/min  
5-5 l/min  
6-6 l/min  
09-9 l/min  
12-12 l/min



36,5

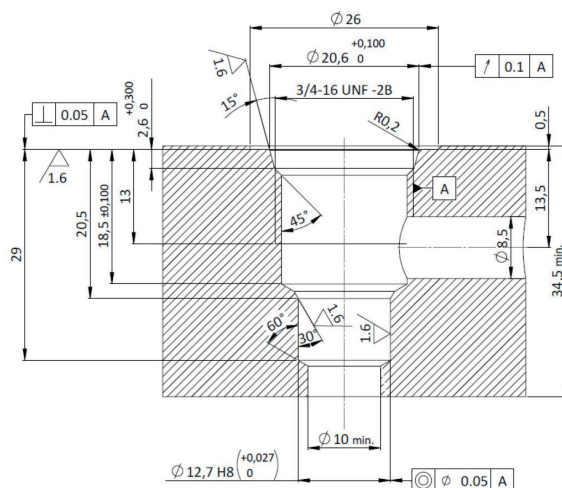
26,5

SW 24

②

①

Tightening torque 40-45Nm



MASS: 0,25 kg

80038