

MONOBLOCK SINGLE SECTION ISO 03 - BOTTOM PORTS

MRSK-3-38G

80 l/min 35 MPa (350 bar)

1 DESCRIPTION

MRSK-3-38 is a basic CETOP 3 baseplate useful for the connection of a single cetop section with A, B, P, T ports which are located in the bottom.

The plate is in steel phosphate coated.

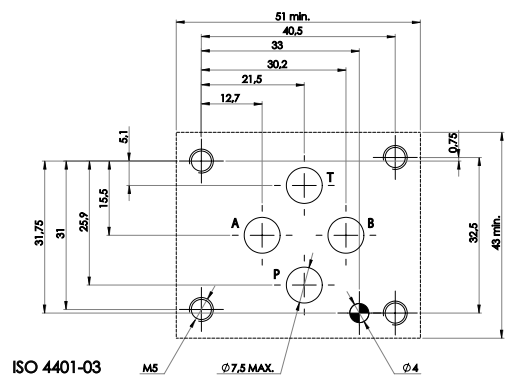
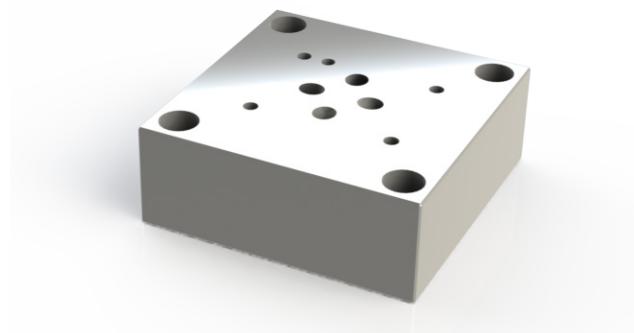
2 ORDERING CODE

(1)	(2)	(3)
MRSK	- 3	- 38G

MRSK: Base plate single section and bottom ports

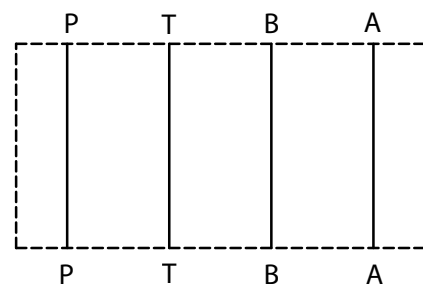
3 : CETOP 3

38 : Ports with G3/8" threads



3 TECHNICAL DATA

Material:	Steel
Coating	Phosphated
Max pressure	35 MPa (350 bar)
Max flow rate	80 l/min
Mass	1,24 kg



4 INSTALLATION DIMENSIONS

