

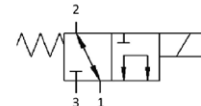
HYDRAULIC SREW-IN VALVES Ex PROOF II 2 GD, Ex db IIC T5 Gb and Ex tb IIIC T 100 °C Db IP66/67
EVX-34-213*/25
 25 l/min 25 MPa (250 bar)

1 DESCRIPTION

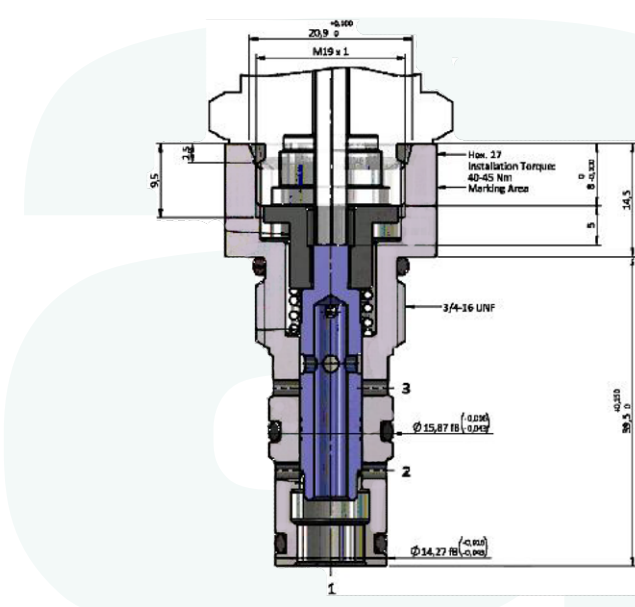
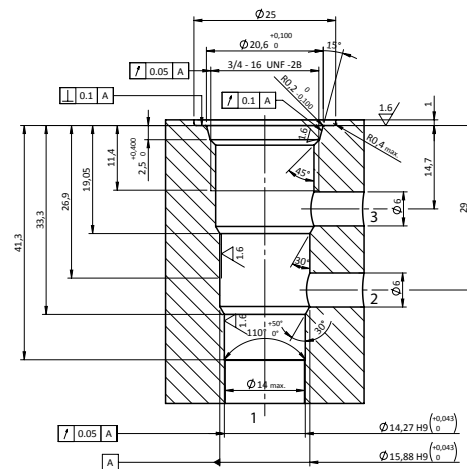
Valves EVX-34-213 are ATEX directional control valve in cartridge style poppet type. It is suitable for a 3 way metric cavity 3/4"-16 UNF. The valve is available with ATEX metallic DC and AC solenoids. The coil is zinc-nichel coated for an enhanced surface protection (ISO 9227, 520 h salt spray). Protection according to IEC 144: Class IP67- External surfaces nickel coated (min. thickness 7 microm) Connection: 3X1,5mm² wire cable (CEI 20-22). Electrical connection must be accordance to Ex-proof norm ATEX. Earth connection both internal, with yellow-green wire in the cable, and external with a minimum 4mm² cable fastened to earth screw.

2 ORDERING CODE

| | | | | | |
|-----|------|-------|-----|-----|------|
| (1) | (2) | (3) | (4) | (5) | (6) |
| EVX | - 34 | - 213 | - | - | / 25 |



- (1) EVX: Ex-proof solenoid operated screw-in poppet valve
- (2) 34: Cavity 3/4-16 UNF
- (3) 213: spool type
- (4) Coils:
 - 012C: 12V DC-0,92A
 - 024C: 24V DC-0,46A
 - 115A: 115V AC-0,10A
 - 230A: 230V AC-0,05A
- (5) cable length :
 - no designation: standard 3m cable
 - 5: 5m
 - 10: 10m
 - 16: 16m
 - 20: 20m
- (6) /25: Design number of the valves Atex solenoid for G and D

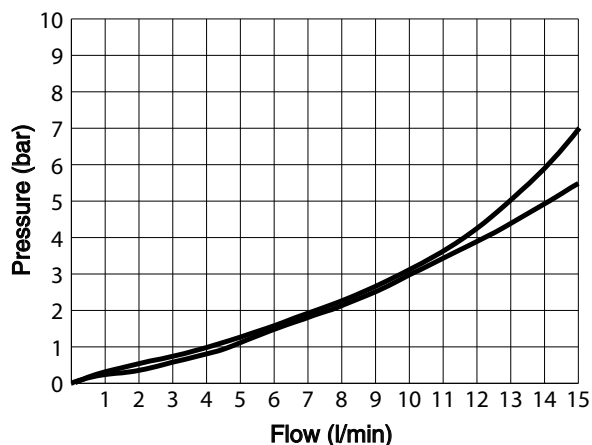


3 TECHNICAL DATA

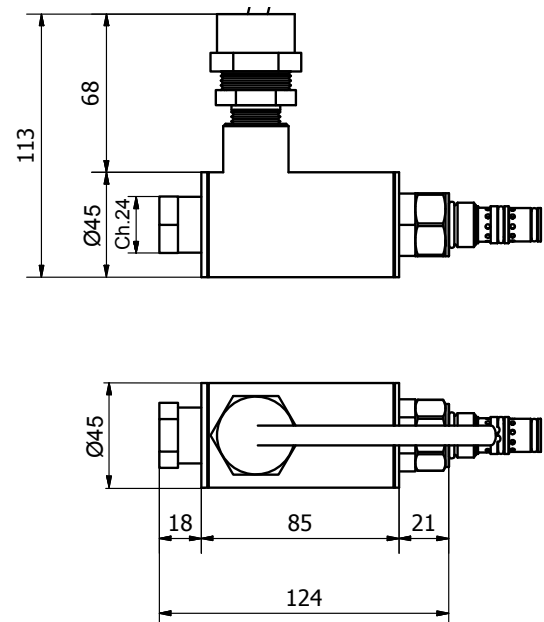
| | |
|--|--|
| Suitable for standard cavity: | 3/4-16 UNF |
| Solenoids according to ATEX 94/9/CE and conform to EN 50281-1-1; EN 60079-0: 2012/A11:2013; EN 60079-1: 2014; EN 60079-31: 2014 | |
| ATEX code/class: | II 2 GD Ex d IIIC T5 |
| Certificate: | INERIS 05ATEX0028X/01 (on request) |
| Max. operating pressure: | 250 bar |
| Max. flow rate: | 25 l/min |
| Duty cycle: | 100% |
| Materials: | Steel body, poppet in tempered and grinded steel |
| Mass | 1,45 kg (coil included) |

4 TYPICAL DIAGRAMS

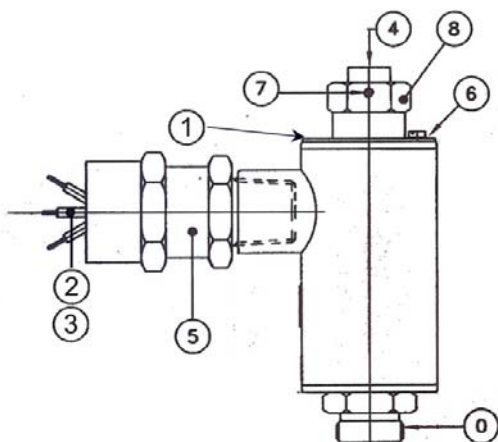
TYPICAL Δp -Q curves for valves EVX-34-213-024C in standard configuration, with mineral oil at 26cSt and 50°C



5 INSTALLATION DIMENSIONS (mm)



6 EXPLOSION PROOF SOLENOID GMA-6/HD SERIES 271 GD



- 0: Ex proof solenoid according to ATEX 94/9/EC. II 2GD Ex db IIC T5 Gb, Ex tb IIIC T100 °C Db IP66/67. Solenoid outside surfaces are zinc-nickel plated, with 7 minimum thickness
- 1: Solenoid label indicates supply voltage, protection class Exd, certification number by INERIS and maximum absorbed power.
- 2: 3-wires cable, according to CEI 20-22, of standard length of 1,5 m, is fastened to the coil and locked by cable gland.
- 3: Wires have 1,5 mm² section; earth connection wire is green-yellow. Electric connection must be in accordance with Ex-proof norm ATEX.
- 4: Manual override operation is by pushing the extended pin.
- 5: Normalised cable gland –torque 8 Nm + 1 – device has threaded attachment ½” conical – ISO 7/1
- 6: Earth connection screw
- 7: Threaded plug (socket hexagon 1,5 mm)to lock the retaining coil nut
- 8: Nut for retaining the coil –torque 6 Nm + 1 – hexagon 24 mm.

Conformity of unit to the norms is not granted if coil is used separately from its electromagnetic tube.

Atex Certificates :
INERIS 05ATEX0028X/02 for Gas and Dust