

ISO 05 PLATE

BM5-G

120 l/min 21 MPa (210 bar)

1 DESCRIPTION

BM5-G is a multi functional CETOP 5 manifold useful to combine many options. It has a standard cavity 7/8" 16 UNF where it is possible to install a pressure relief valve, direct operated or pilot operated or proportional. It is possible to have also a by-pass function integrated in the manifold.

2 ORDERING CODE

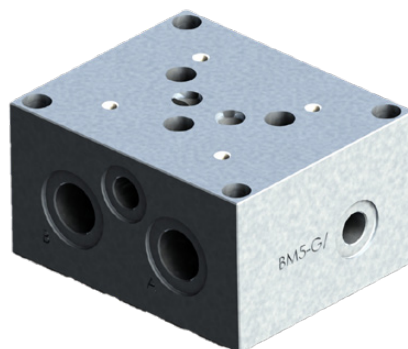
(1)	(2)	(3)	(4)
BM	-	5	-
		G	/
			*

(1) BM: Multi function base plate

(2) 5: CETOP 5

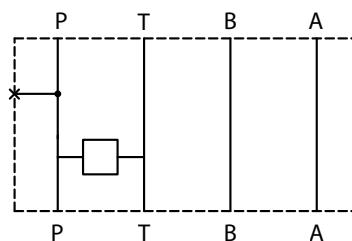
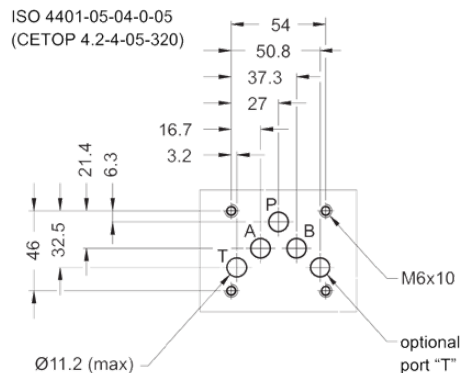
(3) G: Ports with G1/2" threads

(4) *: Different options see [5](#)

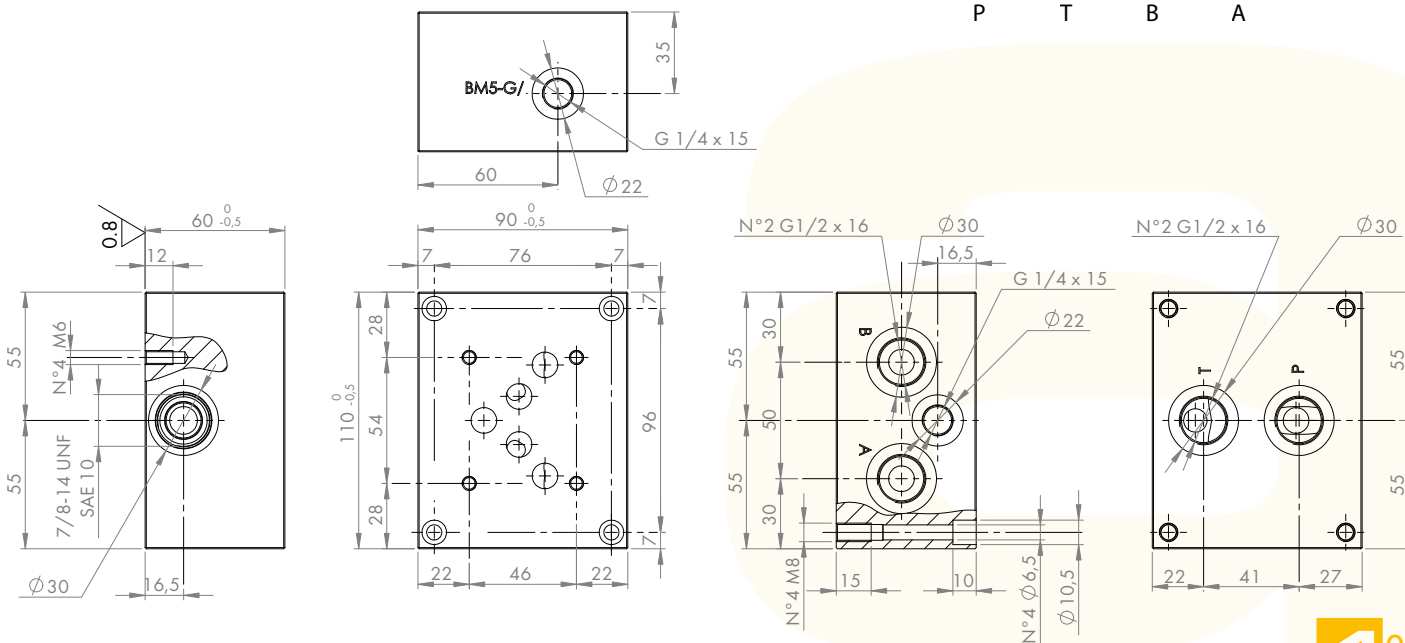


3 TECHNICAL DATA

Material:	Aluminium alloy
Coating	black anodizing
Max pressure	210 bar
Max flow rate	120 l/min
Mass	1,7 Kg

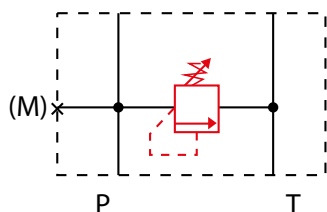


4 INSTALLATION DIMENSIONS



5 OPTIONS

RELIEF VALVE, DIRECTLY OPERATED

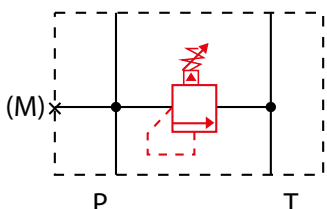


16: Pressure setting 50-116 bar

20: Pressure setting 110-210 bar

Example ordering code: **BM5-G/20**

RELIEF VALVE, PILOT OPERATED

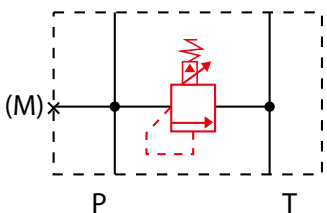


16: Pressure setting 50-116 bar

20: Pressure setting 110-210 bar

Example ordering code: **BM5-G/P20**

RELIEF VALVE, ELECTRICALLY PROPORTIONAL PILOT OPERATED



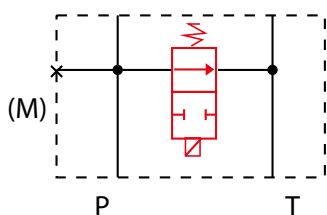
PR12: Pressure up to 120 bar

PR21: Pressure up to 210 bar

Example ordering code: **BM5-G/PR20**

(*) for more details about proportional valve see datasheet PMO*-78

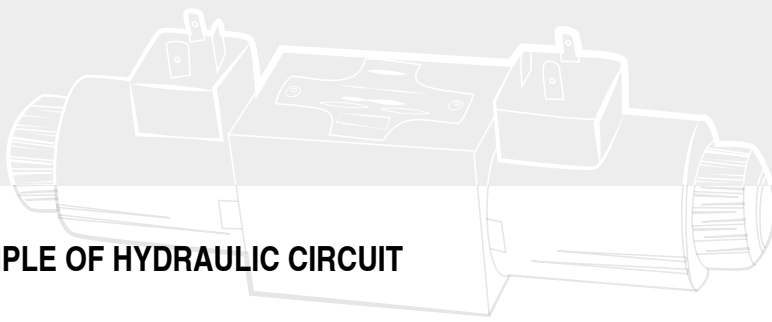
BY-PASS ELECTRICALLY OPERATED VALVE



NO: Normally open

NC: Normally closed

Example ordering code: **BM5-G/NO**



6 EXAMPLE OF HYDRAULIC CIRCUIT

