

STACKABLE CHECK VALVES

AM5-CO-*

100 l/min 35 MPa (350 bar)

1 DESCRIPTION

Direct operated check valve. All the internal part are made with high strenght steel and are machined with accuracy in order to assure the requested tightness.

The controlled lines are A, B or AB.

The standard surface treatment of the body is phosphate coated.



2 ORDERING CODE

| (1) | (2) | (3) | (4) | (5) | (6) |
|-----|-----|-----|-----|-----|------|
| AM5 | - | CO | - | - | / 10 |

(1) AM5 : stackable valve CETOP 05 – Pressure 32 MPa (320 bar)

(2) CO : check valve, spring operated

(3) Service lines where the controls operates

AB : controls on A and B. Fluid flows unrestricted A2->A1 and B2->B1;
flow is controlled from A1->A2 and B1->B.

A : flow is controlled from A1->A2; free on B.

B : flow is controlled from B1->B2; free on A.

(4) Check valve opening (cracking pressure):

no designation : 0,05 MPa (0,5 bar)

3 : 0,3 MPa (3 bar)

5 : 0.5 MPa (5 bar)

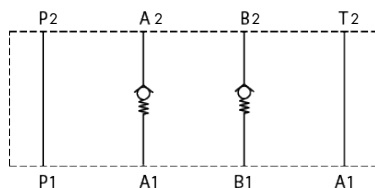
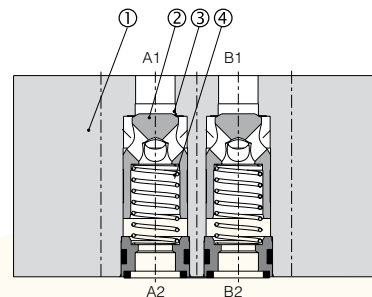
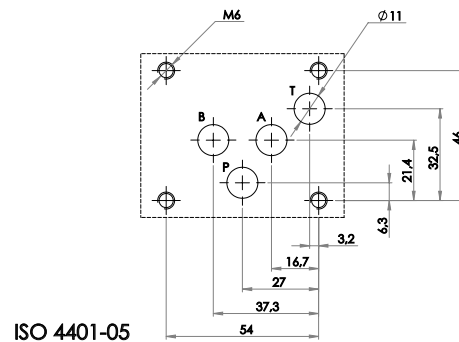
(5) Code reserved for special variants

V : Viton seals

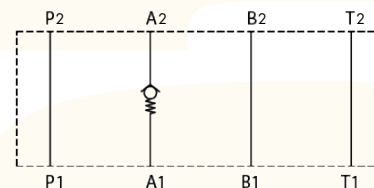
ZT : Zinc- trivalent coated (240 h)

ZN : Zinc-nickel coated (520 h)

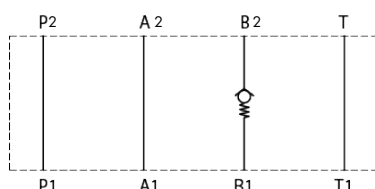
(6) Design number (progressive) of the valve



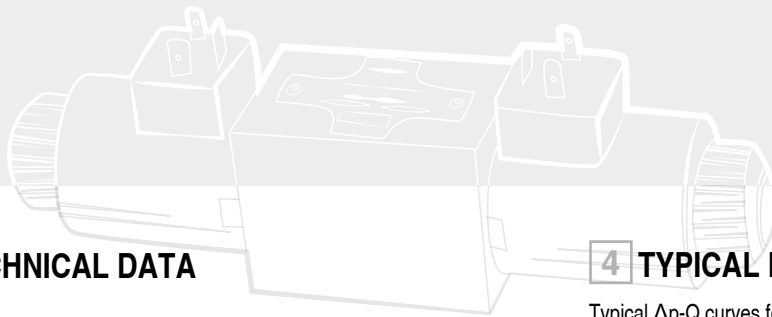
AM5-CO-AB



AM5-CO-A



AM5-CO-B

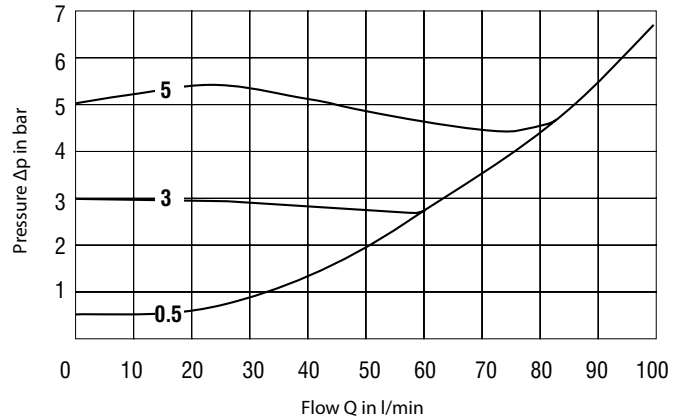


3 TECHNICAL DATA

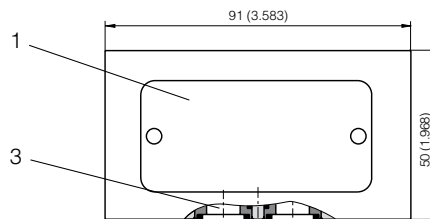
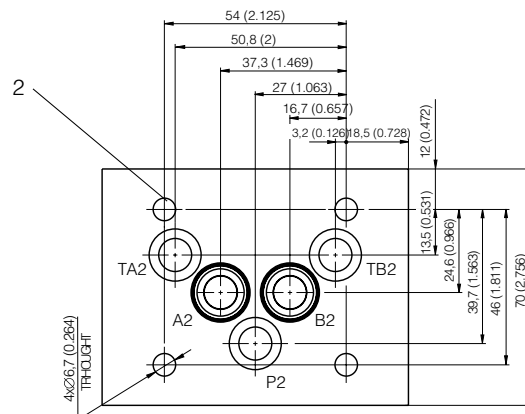
| | |
|--|------------------|
| Maximum rec. flow rate on controlled lines | 60 l/min |
| Maximum rec. flow rate on free channels | 100 l/min |
| Maximum nominal pressure | 35 MPa (350 bar) |
| Pressure drops | see 4 |
| Installation and dimensions | see 5 |
| Weight | 2,25 kg |

4 TYPICAL DIAGRAMS

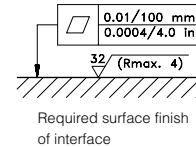
Typical Δp -Q curves for valves AM5-CO-* in standard configuration, with mineral oil at 36 cSt and T=50°C.



5 INSTALLATION DIMENSIONS



- Dimensions in millimeters:
- 1 Name plate
 - 2 4 mounting through-holes
 - 3 Square ring 12.42x1.68 (5 pcs.) supplied with valve



All stackable valves AM5-* conform with ISO and CETOP specifications for mounting surface dimensions and for valves height (50 mm). Leakage between valve and mounting surface is prevented by the positive compression on their seats of 5 seals of Quad-Rings type 12,42 x 1,68 x 1,68 mm or 5 ORings type 12,5 x 1,68.