

STACKABLE VALVE CHECK VALVE ON P LINE

AM3-CO-P/34

25 l/min - 32 MPa (320 bar)

1 DESCRIPTION

Direct operated check valve. All the internal parts are made with high strength steel and are machined with accuracy in order to assure the requested tightness.

The controlled lines is on P line.

The standard surface treatment of the body is phosphate coated. Plugs are zinc coated.



2 ORDERING CODE

(1)	(2)	(3)	(4)	(5)	(6)	
AM3	-	CO	-	P	/	34

(1) AM3: Stackable valve CETOP 03

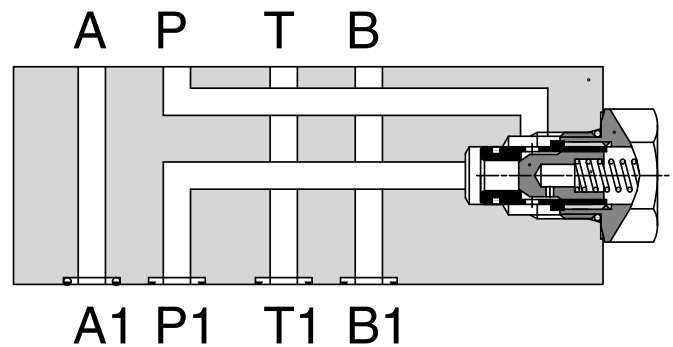
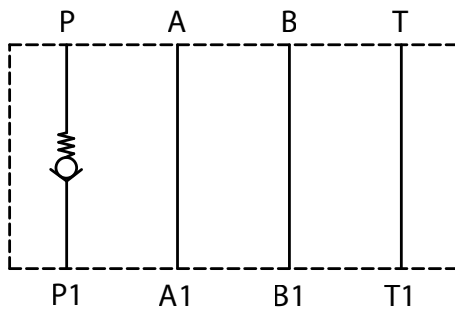
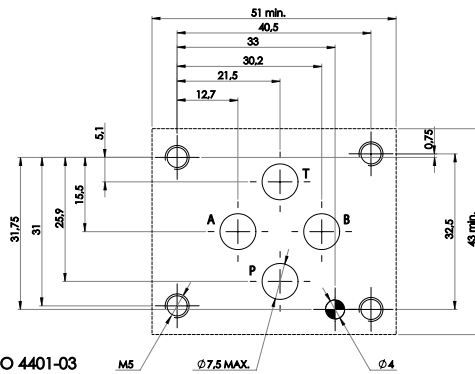
(2) CO: Unidirectional check valve

(3) P: Line where the control operates

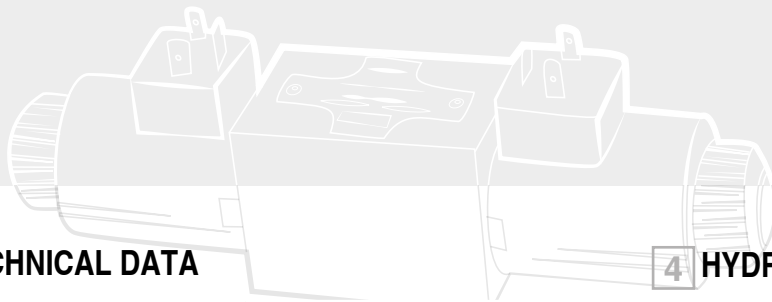
(4) Check valve opening (cracking) pressure (Pm):
 no designation: Pm approx. 0.3 MPa (3 bar)
 8: Pm approx. 0.8 MPa (8 bar)

(5) Code reserved for more options and variants

(6) Cavity for cartridge valves is 3/4" 16 UNF



Fluid flows freely in A, B and T lines. When pressure in P1 overcomes the sum of the pressure in P and the pressure due to the pre-load of spring, the poppet shifts axially and fluid flows from P1 to P. Reverse flow is prevented (without leakage) by the poppet, which is kept against its seat by spring.



3 TECHNICAL DATA

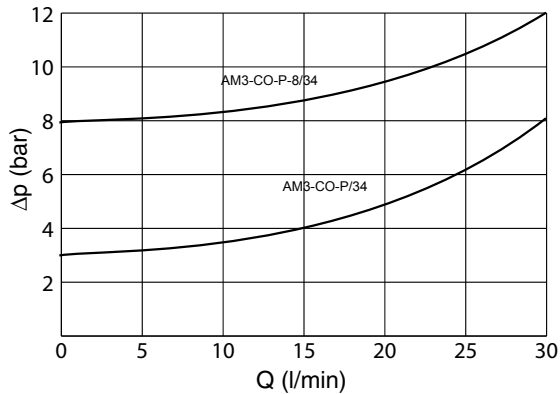
Maximum rec. flow rate on P line	25 l/min
Maximum nominal pressure	32 MPa (320 bar)

4 HYDRAULIC FLUIDS

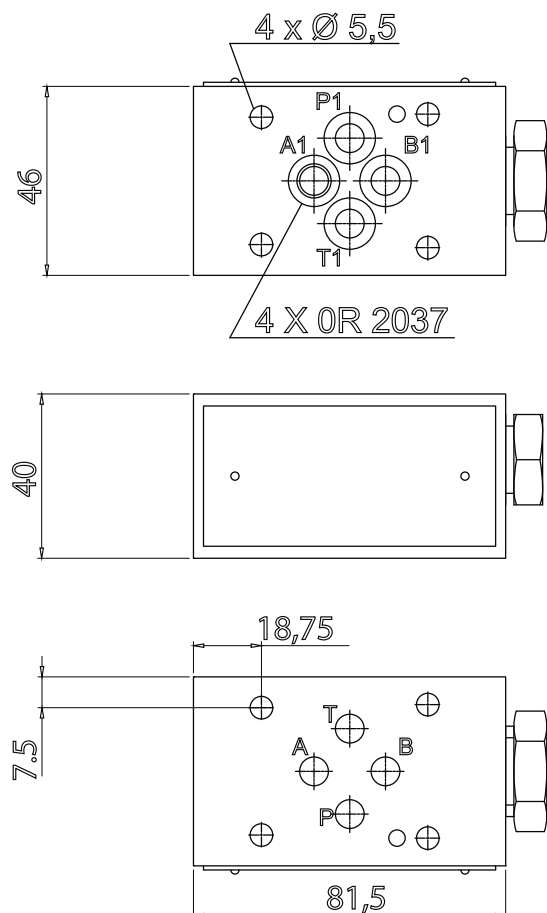
Seals and materials used on standard valves AM3-* are fully compatible with hydraulic fluids of mineral oil base, upgraded with antifoaming and antioxidantizing agents. The hydraulic fluid must be kept clean and filtered to ISO 4406 class 19/17/14, or better, and used in a recommended viscosity range from 10cSt to 60 cSt.

5 TYPICAL DIAGRAMS

measured at $v = 36$ cSt and 50°C



6 INSTALLATION DIMENSIONS (mm)



All stackable valves AM3-* conform with ISO and CETOP specifications for mounting surface dimensions and for valves height (40 mm). Leakage between valve and mounting surface is prevented by the positive compression on their seats of 4 seals of OR type