

STACKABLE PRESSURE RELIEF VALVES

AM2-MO-*

20 l/min - 32 MPa (320 bar)

1 DESCRIPTION

Stackable pressure relief valve direct operated. The valve is made with a steel body combined with a pressure relief cartridge valve with an anti vibration system.

The body of the valve is phosphate coated. The cartridge valve is zinc coated. The pressure can be set in different pressure ranges.



2 ORDERING CODE

(1)	(2)	(3)	(4)	(5)	(6)	(7)
AM2	-	MO	-	/	-	-
						/ 10

(1) AM2 : stackable valve CETOP 02 - Pressure 32 MPa (320 bar)

(2) MO : pressure relief, direct acting

(3) Service lines where the controls operate:

P : relief on P and discharge to T

B : relief on B and discharge to T

BA: independent relief on B and on A and discharge to T

AB: relief on A and B with crossed discharge

(4) Pressure adjustment ranges:

10: from 6,3 MPa to 12,5 MPa (from 63 to 125 bar)

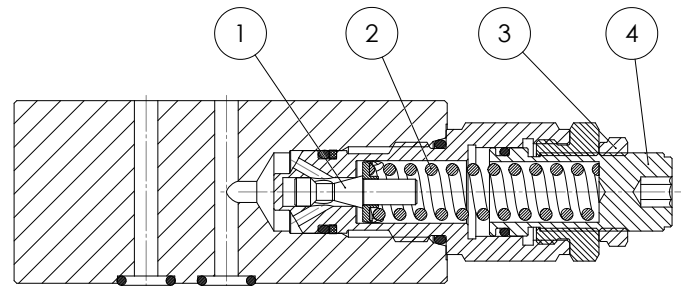
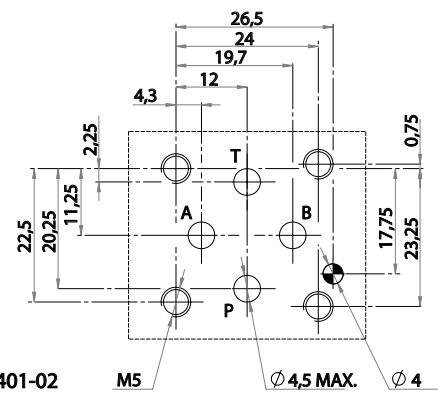
20: from 8 MPa to 21 MPa (from 80 to 210 bar)

32: from 12,5 MPa to 35 MPa (from 125 to 350 bar)

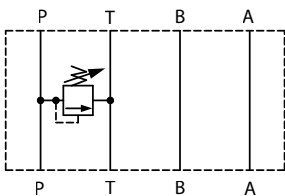
(5) Pressure adjustment range for relief on A (only for models AM2-MO-BA)

(6) Code reserved for special variants (materials, seals, surface treatments, etc.)

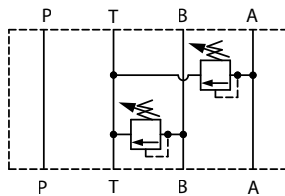
(7) Design number (progressive) of the valves.



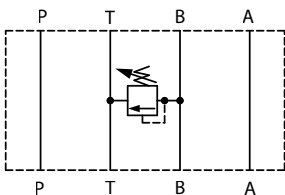
AM2-MO-P



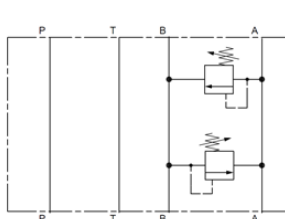
AM2-MO-BA



AM2-MO-B



AM2-MO-AB



Fluid flows freely on A, B, P and T lines; when on service line, protected by the relief valve, the pressure exceeds the settled value, the piston 1 is pushed by axial hydraulic force, overcomes the force of spring 2, and shifts in its cylindrical seat and opens to the pressurized fluid annular passage to T, thus keeping the pressure level at the requested value.

