

MONOBLOCK SINGLE SECTION ISO 03 - BOTTOM PORTS

MRSK-3-38G

80 l/min 35 MPa (350 bar)

1 DESCRIPTION

MRSK-3-38 is a basic CETOP 3 baseplate useful for the connection of a single cetop section with A, B, P, T ports which are located in the bottom. The plate is in steel phosphate coated.

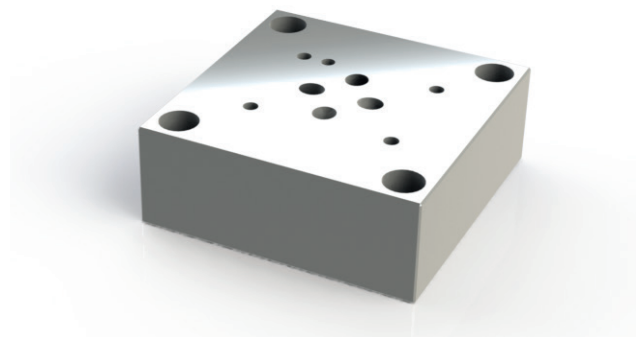
2 ORDERING CODE

| | | | | |
|------|---|-----|---|-----|
| (1) | | (2) | | (3) |
| MRSK | - | 3 | - | 38G |

MRSK: Base plate single section and bottom ports

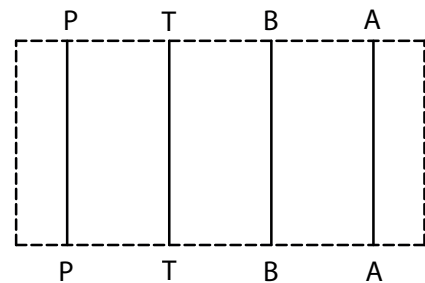
3 : CETOP 3

38 : Ports with G3/8" threads



3 TECHNICAL DATA

| | |
|---------------|------------------|
| Material: | Steel |
| Coating | Phosphated |
| Max pressure | 35 MPa (350 bar) |
| Max flow rate | 80 l/min |
| Mass | 1,24 kg |



4 INSTALLATION DIMENSIONS

