

## PILOT OPERATED, CHECK VALVES

### FT257/7

32 MPa (320 bar)

#### 1 DESCRIPTION

Pilot operated check valves, poppet type BSP thread ports for in-line assembly Pilot port: 1/4" BSP Body, poppet and spring in steel. Maximum operating pressure: 320 bar. Outer section for easier assembly with hexagonal spanner.



#### 2 ORDERING CODE

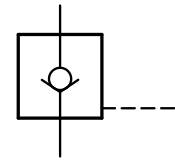
(1)					(2)
FT	257	/	7	-	

(1) FT257/7: pilot operated check valve

(2) dimensions:

- 14: Ports (Ø A) 1/4" BSP, Qmax 16l/min- pilot ratio 1/5,3  
B 12,5 - D 100 - E 12 - CH 38 - CH1 28
- 38: Ports (Ø A) 3/8" BSP, Qmax 30l/min- pilot ratio 1/5  
B 12,5 - D 115 - E 12 - CH 41 - CH1 34
- 12: Ports (Ø A) 1/2" BSP, Qmax 60l/min- pilot ratio 1/5,3  
B 15,5 - D 139 - E 12 - CH 46 CH1 41

(subject to technical and dimensional changes without notice)



#### 3 TYPICAL DIAGRAMS

