

FLOW RESTRICTOR VALVES

AM3-FO-*

60 l/min - 32 MPa (320 bar)

1 DESCRIPTION

Stackable valve CETOP 3 with flow restrictor function. It is possible to control the lines A, B or AB simply turning the side screws.
On demand it is possible to have also the fine control option.



2 ORDERING CODE

(1)	(2)	(3)	(4)	(5)	(6)
AM3	-	FO	-	-	/ 10

(1) AM3: stackable valve CETOP 03 - Pressure 32 MPa (320 bar)

(2) FO: flow restrictor valves with two-way control

(3) Service lines where the controls operates:

AB: controls on A and B. Fluid flows restricted A <-> A, and B <-> B

A : flow is restricted A<-> A; free on B, P and T

B : flow is restricted B<-> B; free on A, P and T

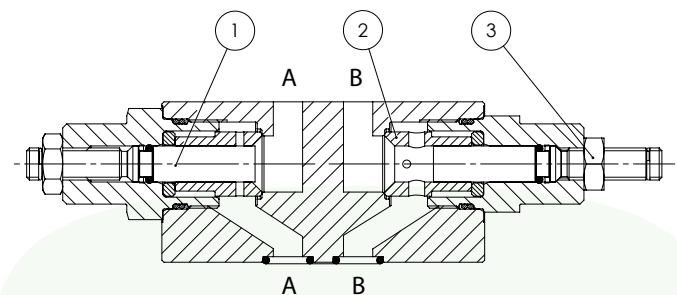
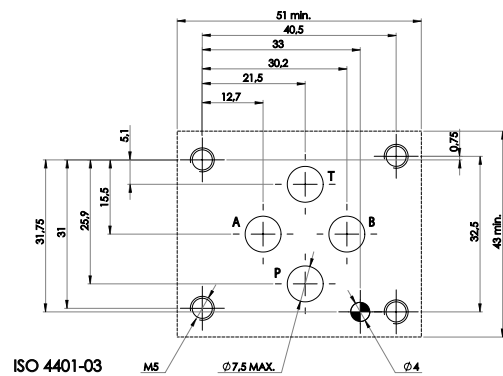
(4) Flow control characteristics

no designation: standard control

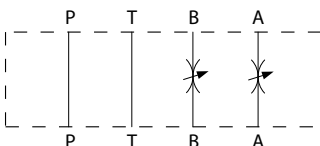
V: fine control

(5) Code reserved for option and variants

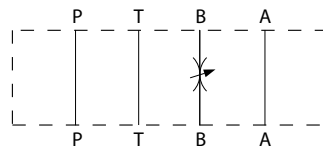
(7) Design number (progressive) of the valves



AM3-FO-AB



AM3-FO-B



AM3-FO-A

