

## STACKABLE VALVE ADJUSTABLE FLOW CONTROL

### AM3-FO-P/34

25 l/min - 32 MPa (320 bar)

#### 1 DESCRIPTION

Stackable valve CETOP 3 with flow restrictor function. With this model it is possible to control the line P.

On demand it is possible to have also the fine control option.



#### 2 ORDERING CODE

(1)	(2)	(3)	(4)	(5)	(6)
AM3	-	FO	-	P	-
					/
					34

(1) AM3: Stackable valve CETOP 03

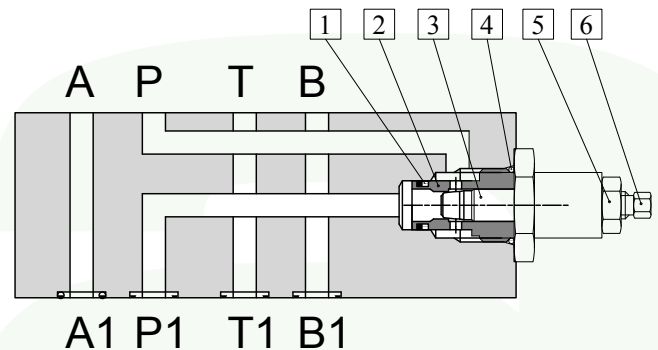
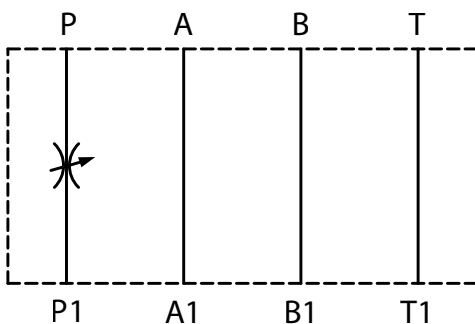
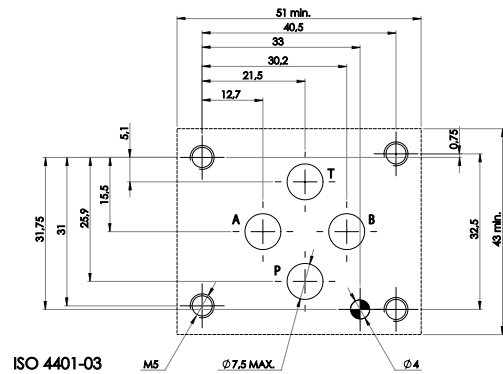
(2) FO: adjustable flow control valve

(3) P: Line where the control operates

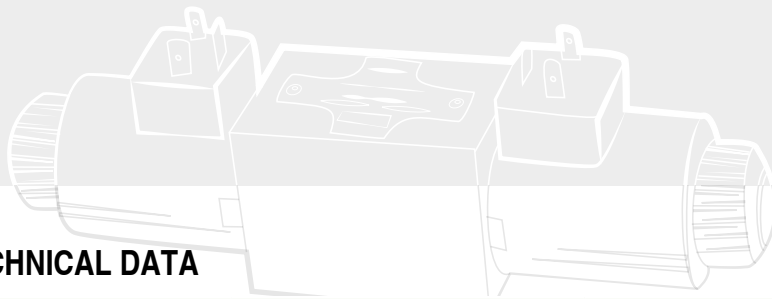
(4) Flow adjustment device :  
no designation : hexagon screw  
M: hand knob

(5) Code reserved for more options and variants

(6) Cavity for cartridge valves is 3/4" 16 UNF



Fluid flows freely on A, B and T lines. Fluid that flows on P line is regulated by a variable throttle valve, consisting in a needle 3 (which position is set by the adjustment screw 6) that changes the section of an annular passage.

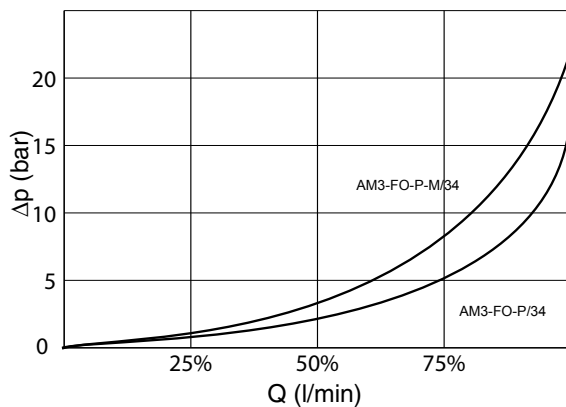


### 3 TECHNICAL DATA

Maximum rec. flow rate on P line	25 l/min	Adjustment of the regulated flow:
Maximum nominal pressure	32 MPa (320 bar)	To decrease flow in P line turn clockwise the adjustment screw 6 (or the hand knob), after having unlocked its retaining nut 5

### 4 TYPICAL DIAGRAMS

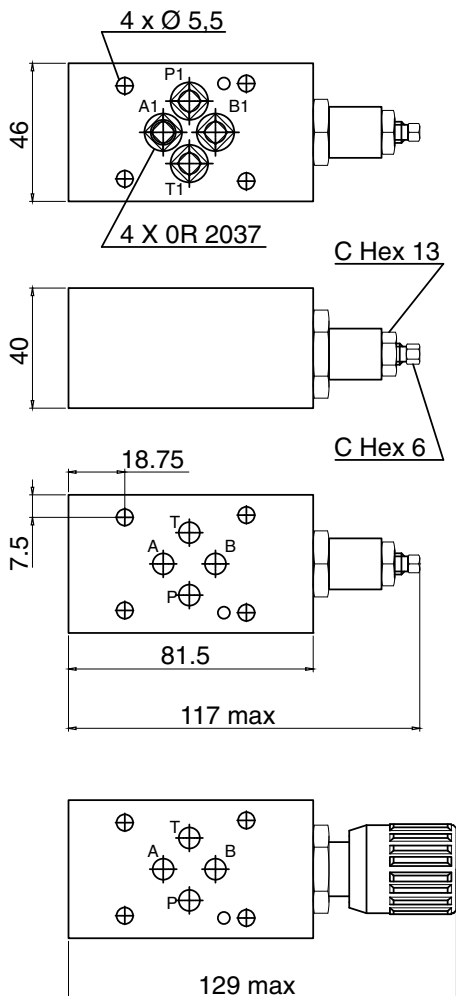
measured at  $\nu = 36$  cSt and  $50^\circ\text{C}$



### 5 HYDRAULIC FLUIDS

Seals and materials used on standard valves AM3-\* are fully compatible with hydraulic fluids of mineral oil base, upgraded with antifoaming and antioxidantizing agents. The hydraulic fluid must be kept clean and filtered to ISO 4406 class 19/17/14, or better, and used in a recommended viscosity range from 10 cSt to 60 cSt.

### 6 INSTALLATION DIMENSIONS (mm)



All stackable valves AM3-\* conform with ISO and CETOP specifications for mounting surface dimensions and for valves height (40 mm). Leakage between valve and mounting surface is prevented by the positive compression on their seats of 4 seals of OR type