

STACKABLE VALVES FLOW RESTRICTOR

AM2-FO-*

30 l/min - 32 MPa (320 bar)

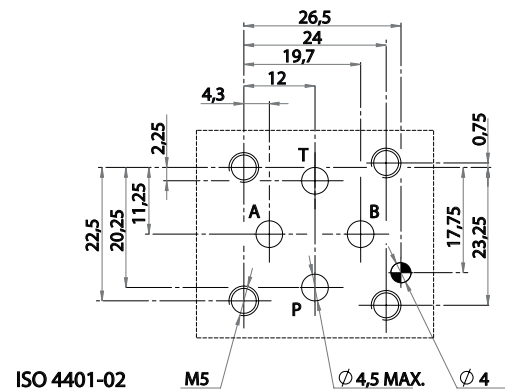
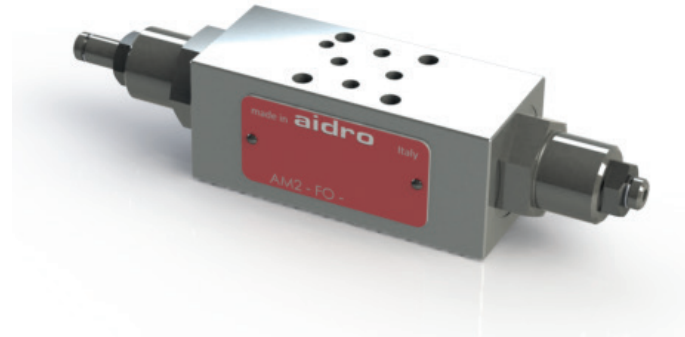
1 DESCRIPTION

Stackable valve CETOP 2 with flow restrictor function. It is possible to control the lines A, B or AB simply turning the side screws.
On demand it is possible to have also the fine control option.

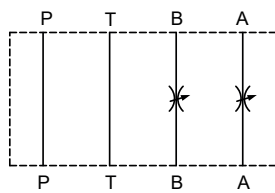
2 ORDERING CODE

| | | | | | |
|-----|-----|-----|-----|-----|------|
| (1) | (2) | (3) | (4) | (5) | (6) |
| AM2 | - | FO | - | - | / 10 |

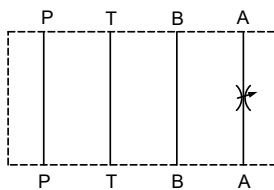
- (1) AM2: stackable valve CETOP 02- Pressure 32 MPa (320bar)
- (2) FO: flow restrictor valves with two-way control
- (3) Service lines where the controls operate:
 AB: controls on A and B. Fluid flows restricted A <-> A and B <-> B
 A : flow is restricted A <-> A; free on B, P and T
 B : flow is restricted B <-> B; free on A, P and T
- (4) Flow control characteristics
 no designation : standard control
 W: fine and sensitive control
- (5) Code reserved for special variants (materials, seals, surface treatments etc.)
- (6) Design number (progressive) of the valves



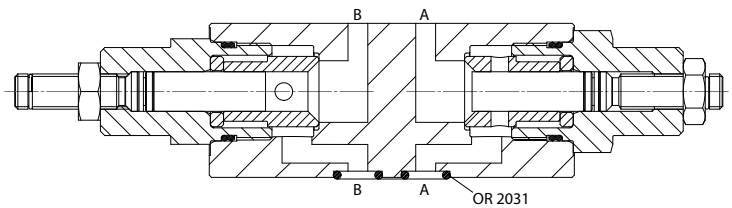
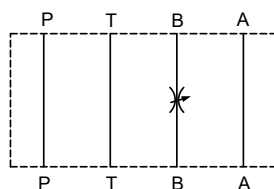
AM2-FO-AB

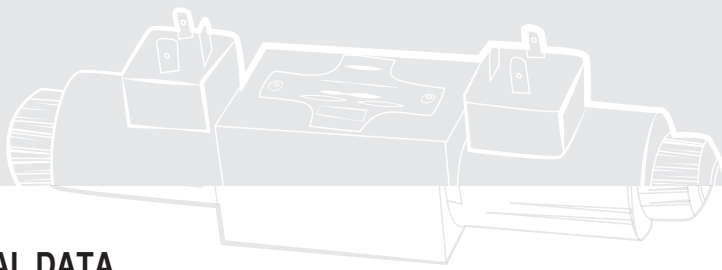


AM2-FO-A



AM2-FO-B



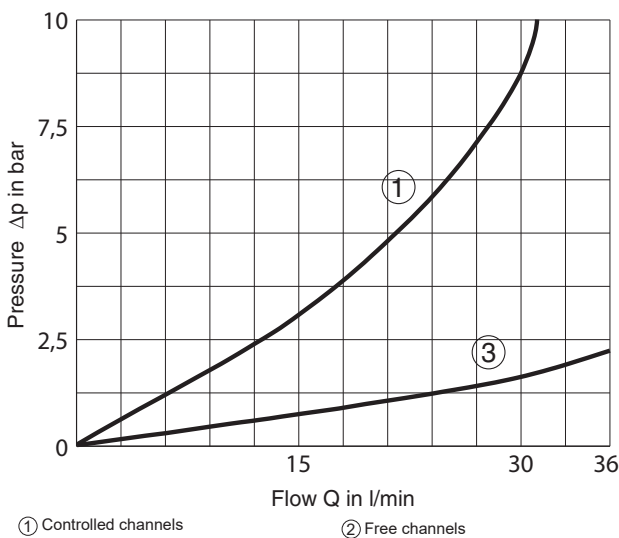


3 TECHNICAL DATA

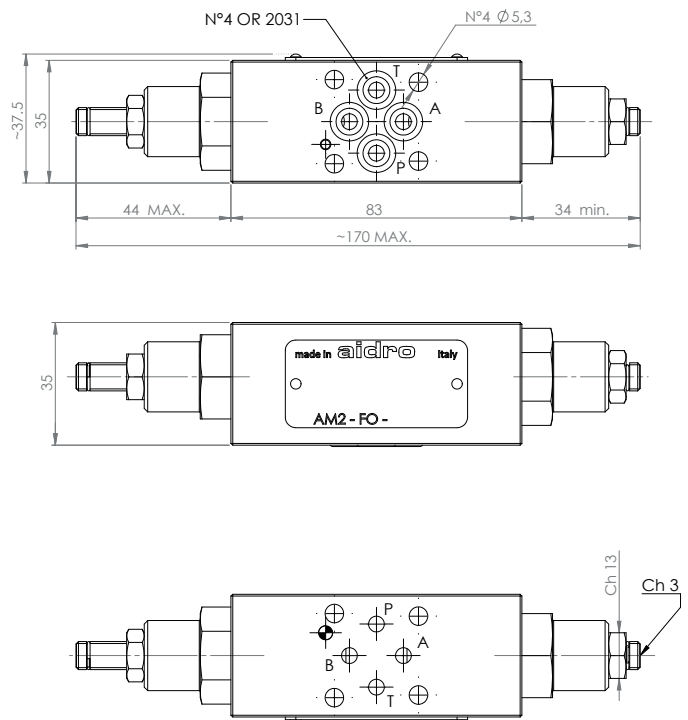
| | | |
|-----------------------------|-----------------------------------|--|
| Maximum nominal flow | 32 l/min | Control of the flow: The control is made by throttling through variable orifices obtained on sleeve and partially obstructed by throttling axis. Depending on the various sleeve/axis combination, the control adjustment is: - (standard) : orifices area is reduced from 100% (*) to 0% with 6 complete turns of the adjustment screw. W (fine and sensitive): from 100% (*) to 0% with 8 complete turns - special variant (*) 100% approx: Q=0.5 dm ³ /s (30 l/min) at Δp=1MPa (10 bar) The axis is shifted to increase throttling by unlocking its nut and turning clock wise the adjustment screw. Suitable mechanical stops prevent dangerous manoeuvring. |
| Maximum rec. flow rate | 0,5 dm ³ /s (30 l/min) | |
| maximum nominal pressure | 32 MPa (320 bar) | |
| Pressure drops | see 4 | |
| Installation and dimensions | see 5 | |
| Mass | approx 0,8 kg | |

4 TYPICAL DIAGRAMS

Typical Δp-Q curves for valves AM2-FO-* in standard configuration, with mineral oil at 36 cSt and at 50° C with throttling axis at full retraction



5 INSTALLATION DIMENSIONS (mm)



6 HYDRAULIC FLUIDS

Seals and materials used on standard valves AM2-* are fully compatible with hydraulic fluids of mineral oil base, upgraded with antifoaming and antioxidantizing agents. The hydraulic fluid must be kept clean and filtered to ISO 4406 class 19/17/14, or better, and used in a recommended viscosity range from 10 cSt to 60 cSt.

All stackable valves AM2-FO conform with ISO and CETOP specifications for mounting surface dimensions (see also front page). Valves height 35 mm. Leakage between valve and mounting surface is prevented by the positive compression on their seats of 4 seals of OR type. All valves have on their "mounting" surface a ø 4 mm cylindrical hole and are equipped on their "seals" surface by a ø 3 mm locating pin, to conform with the norms. In case of necessity, the pin can be easily removed.