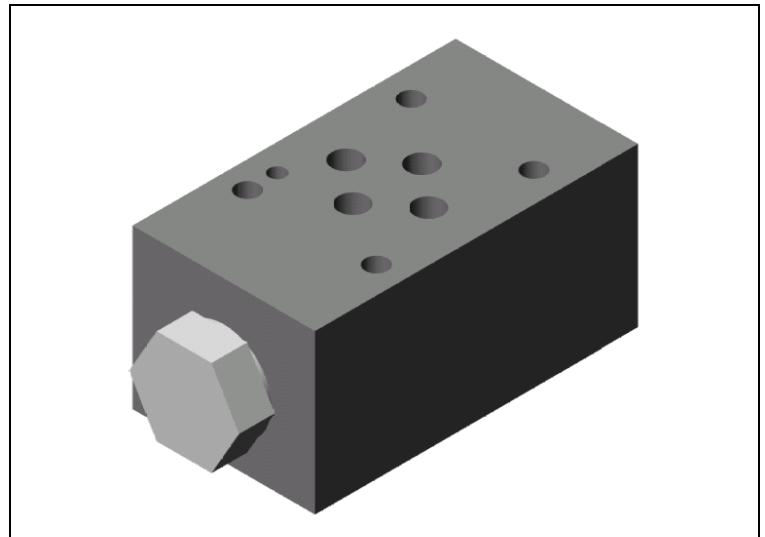
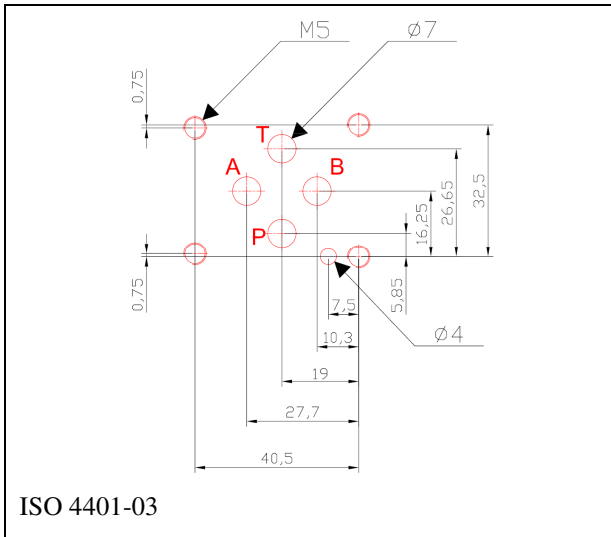
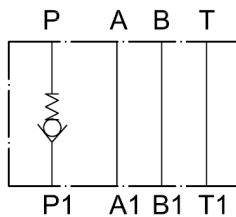


## Stackable valves CETOP 03 check valve on P line type AM3-CO-P/34



### 2 FUNCTIONAL SYMBOLS



### 1 HOW TO READ THE MODEL CODE FOR VALVES AM3-CO-P/34

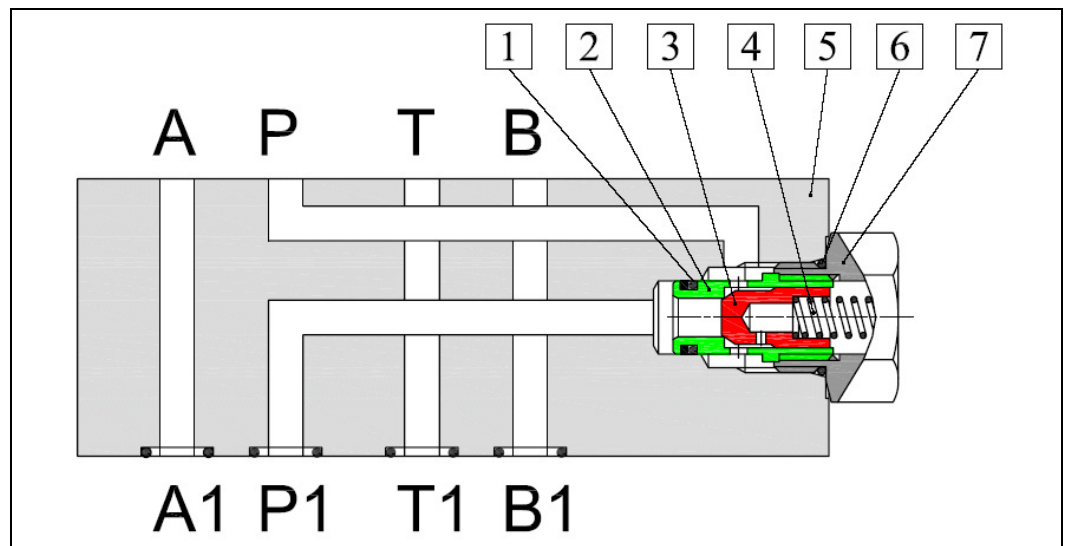
<b>AM3</b>	-	<b>CO</b>	-	<b>P</b>	-	<b>*</b>	-	<b>**</b>	/	<b>34</b>
①		②		③		④		⑤		⑥
①	<b>AM3</b>	:		Stackable valve CETOP 03						
②	<b>CO</b>	:		Unidirectional check valve						
③	<b>P</b>	:		Line where the control operates (see functional symbols 2)						
④	<b>*</b>	:		Check valve opening (cracking) pressure ( $P_m$ ):						
				- (standard)	:	$P_m$ approx.	0.3 MPa (3 bar)			
				8	:	$P_m$ approx.	0.8 MPa (8 bar)			
⑤	<b>**</b>	:		Code reserved for special variant						
⑥	<b>34</b>	:		Cavity for cartridge valves is 3/4" 16 UNF						

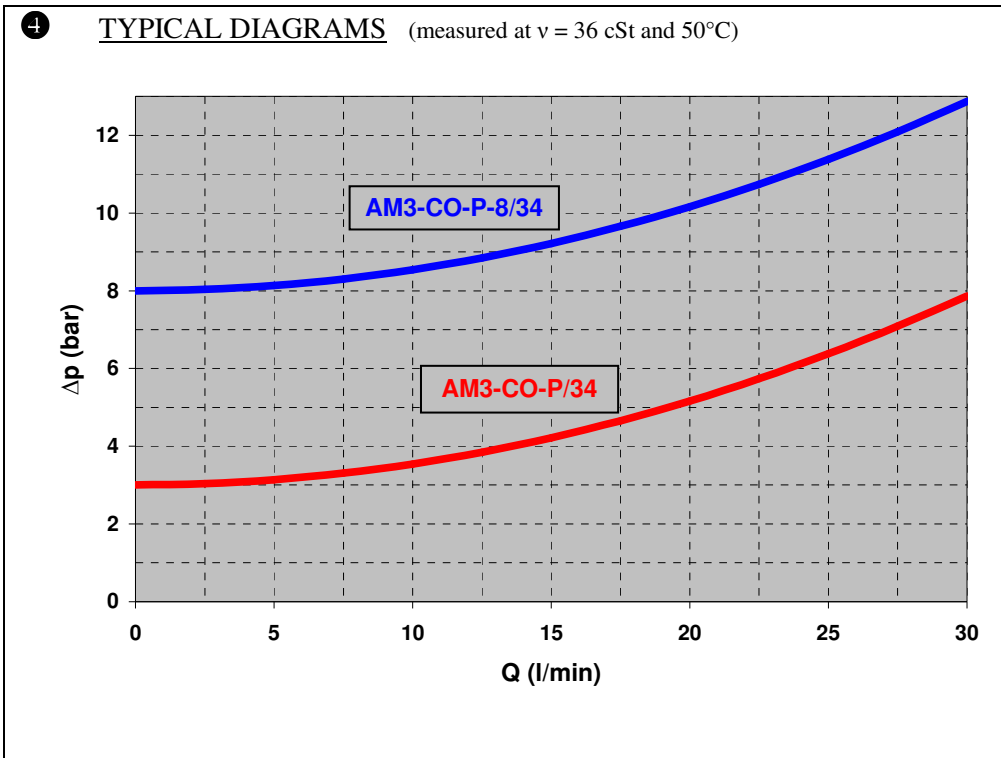
### 3 DESCRIPTION

Fluid flows freely in A, B and T lines.

When pressure in P1 overcomes the sum of the pressure in P and the pressure due to the pre-load of spring 4, the poppet 3 shifts axially and fluid flows from P1 to P.

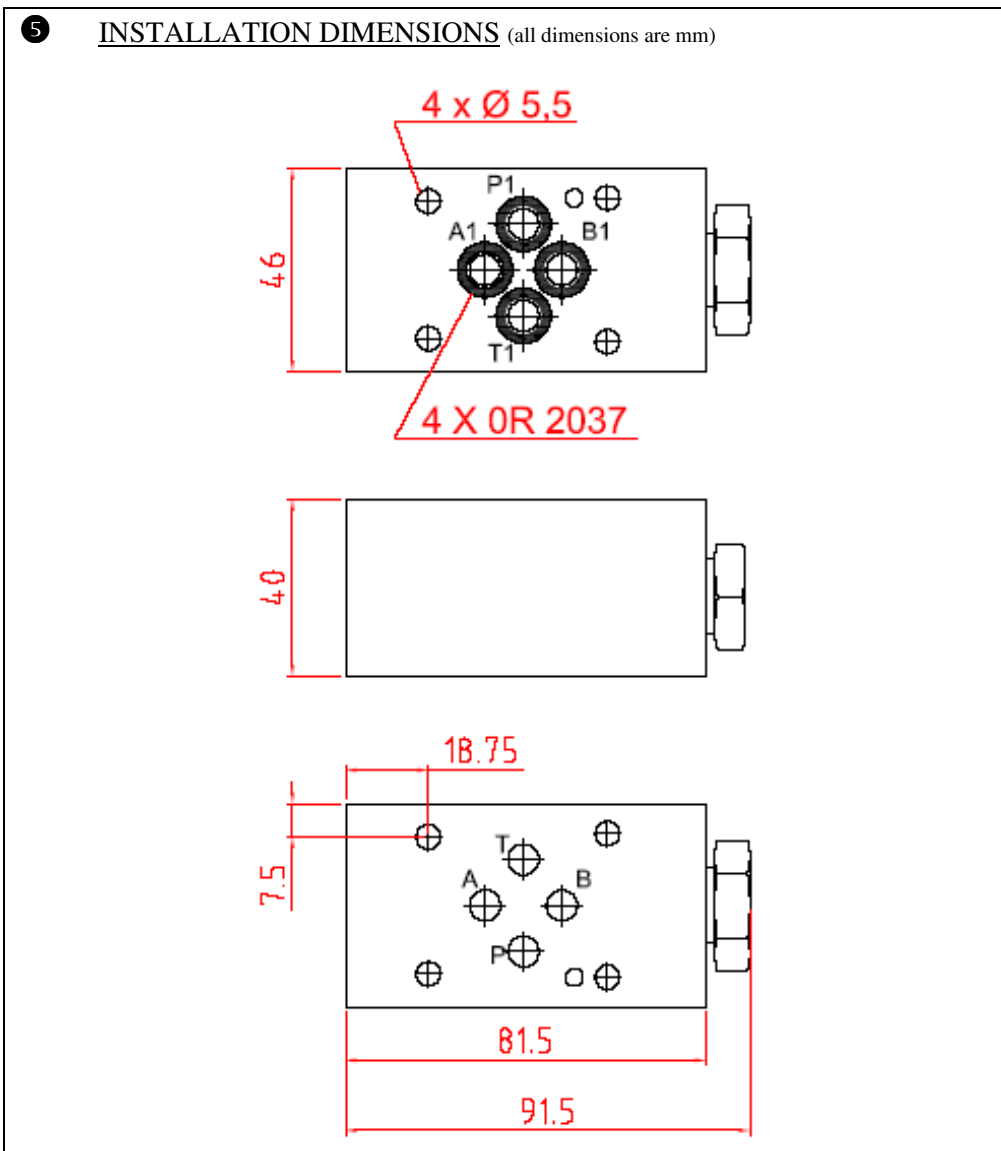
Reverse flow is prevented (without leakage) by the poppet 3, which kept against its seat 2 by spring 4.





**6 DATA AND OPERATING LIMITS**

Maximum nominal pressure	25 MPa (250 bar)
Maximum rec. flow rate on P line	25 l/min



**7 INSTALLATION**

All stackable valves AM3-\* conform with ISO and CETOP specifications for mounting surface dimensions and for valves height (40mm). Leakage between valve and mounting surface is prevented by the positive compression on their seats of 4 seals of OR type.

**8 HYDRAULIC FLUIDS**

Seals and materials used on standard valves AM3-\* are fully compatible with hydraulic fluids of mineral oil base, upgraded with antifoaming and antioxidizing agents. The hydraulic fluid must be kept clean and filtered to ISO 4406 class 19/17/14, or better, and used in a recommended viscosity range from 10 cSt to 60 cSt.