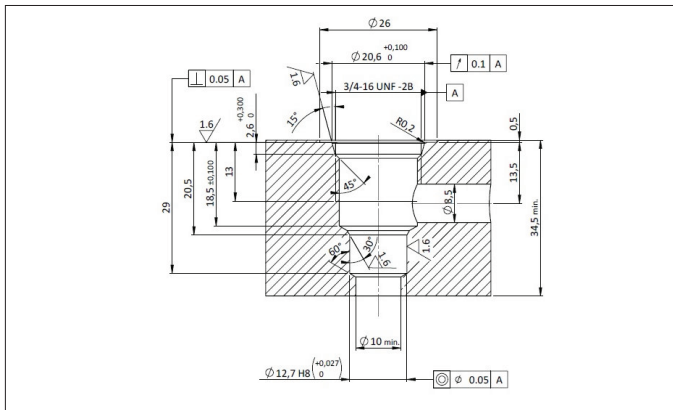


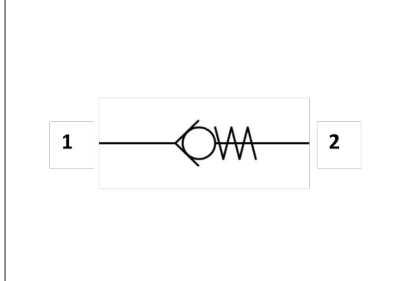
## SCREW IN POPPET CHECK VALVE CAVITY 3/4" 16 UNF TYPE VUC-34\*

Qmax = 40 l/min

Pnom = 35 MPa (350 bar)



### 2 FUNCTIONAL SYMBOL



### 1 HOW TO READ THE MODEL CODE FOR VUC-34

**VUC - 34 - (1)**  
①    ②    ③

- ① **VUC** : check valve
- ② **34** : cavity 3/4" 16 UNF ( $\phi$  12,7 mm)
- ③ **(1)** : cracking pressure  
 -- : 3 bar (standard execution)  
 1 : 8 bar

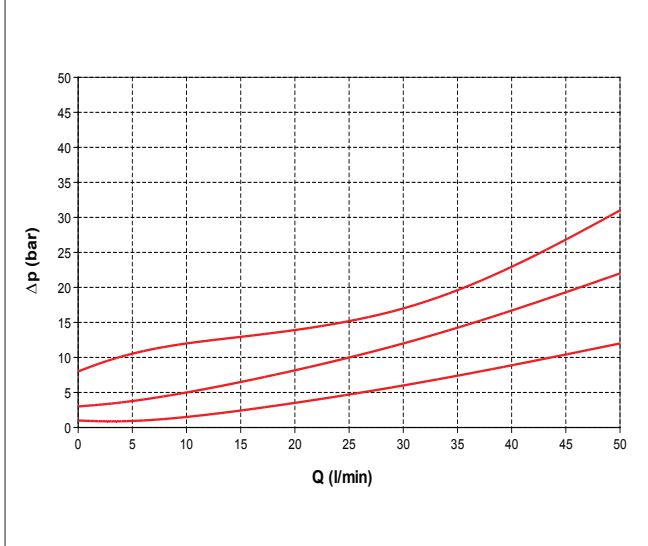
### 3 DESCRIPTION

Valve is designed as simple lock or load-holding device. Flow is free from 1 to 2 and valve opens against the force of the spring. In the direction 2 -1 the flow is blocked and not permitted. Tightness is assured by high quality poppet made in hardened steel.

### 4 TECHNICAL DATA

- Maximum flow : 40 l/min
- Maximum pressure : 350 bar (35 Mpa)
- Installation torque : 40-45 Nm
- Weight : 0,06 Kg

### 5 PERFORMANCES



### 6 CROSS SECTION

