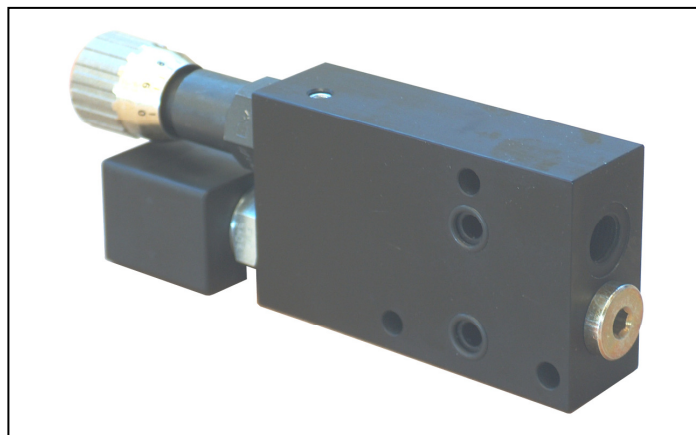
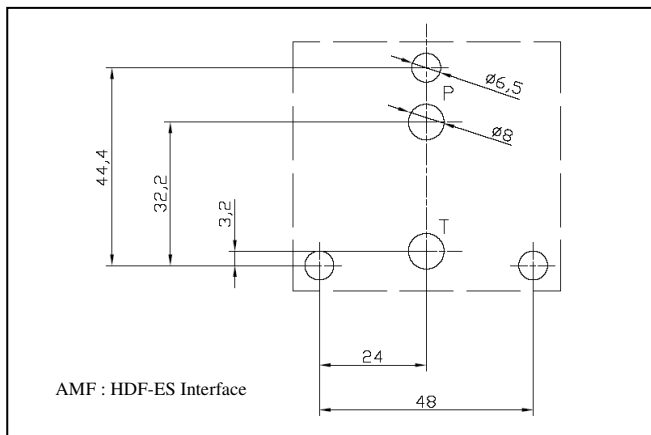
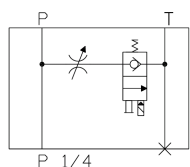


# Inlet/Outlet Modules Stackable With HDF(\*)-ES Valves Type AMF-SE-\*\*-\*

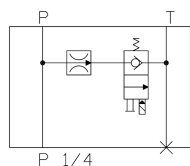


### FUNCTIONAL SYMBOLS

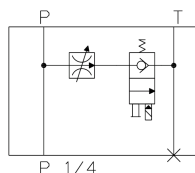
AMF-SE-CV



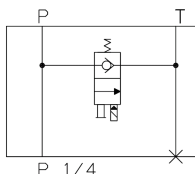
AMF-SE-Q(\*)



AMF-SE-QV



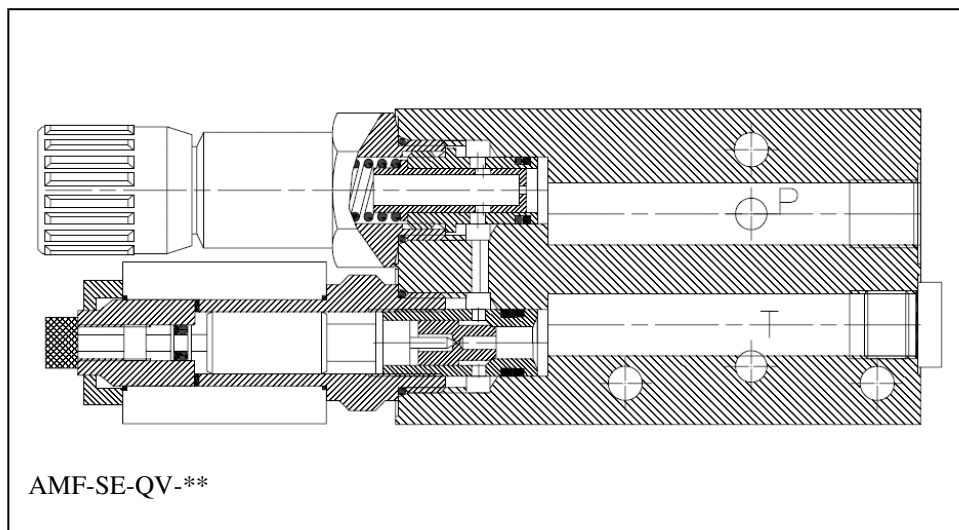
AMF-SE-CO



### HOW TO READ THE MODEL CODE FOR MODULES AMF-SE

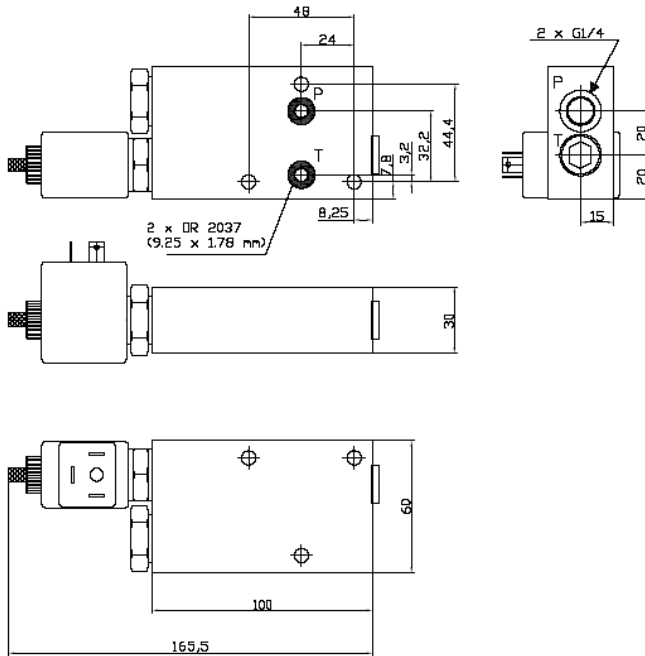
AMF - SE - (CV) - (012C)  
(1) (2) (3) (4)

- (1) AMF : plate stackable with 4 way solenoid valve type HDF-ES and/or minipowerpacks type SCLA
- (2) SE : with NC 2/2 solenoid valve ; function typical for simple acting cylinders
- (3) (CV) : CV : throttle adjustable  
Q1 : fixed flow 1 l/min, pressure compensated  
Q2 : fixed flow 2 l/min, pressure compensated  
Q4 : fixed flow 4 l/min, pressure compensated  
QV : adjustable flow, pressure compensated  
CO : no flow control
- (4) (012C) : solenoid valve voltage : 012C = 12V DC  
024C = 24V DC

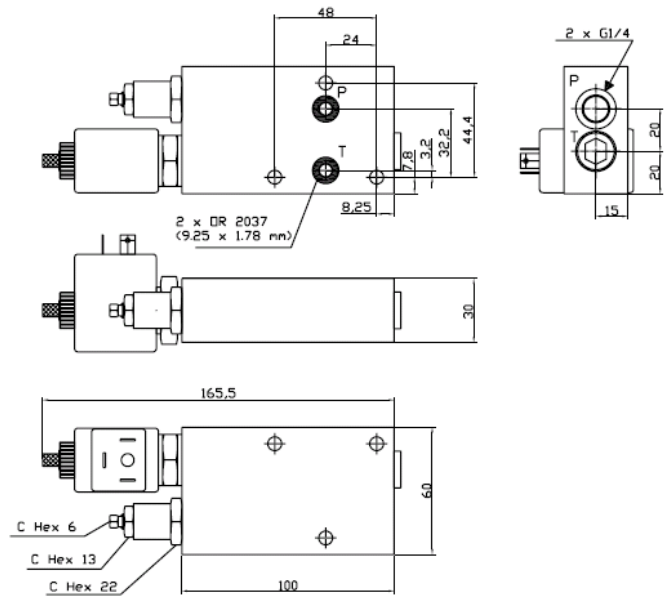


## INSTALLATION DIMENSIONS

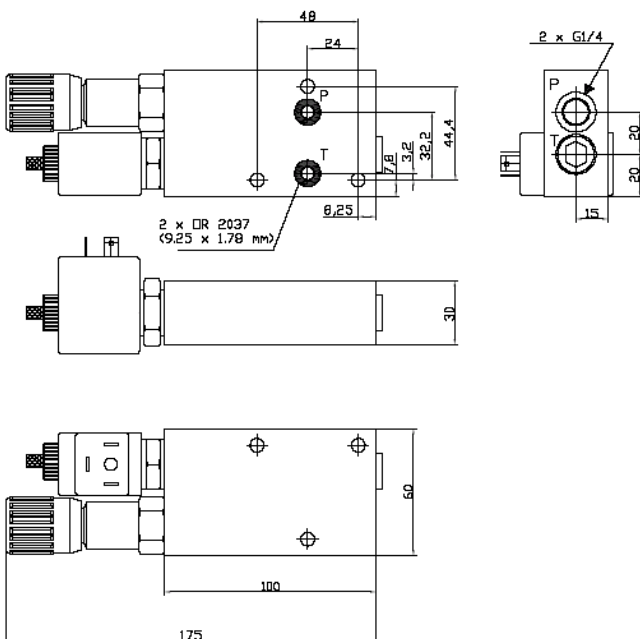
AMF-SE-Q(\*)-\*\* ; AMF-SE-CO



AMF-SE-CV-\*\*



AMF-SE-QV-\*\*



### FLOW CONTROL VALVES

- CV Type : flow from P to T line is regulated by a VCF-34 throttle valve that changes the section of an annular passage to T line. To decrease the flow rate, from P to T line, turn clockwise the adjustment screw, after having unlocked its nut.
- Q(\*) Type : flow is regulated by a VSC-34 fixed pressure compensated flow control valve
- QV Type : flow from P to T line is regulated by a FT-268/2-34 variable pressure compensated flow control valve. To decrease the flow rate, from P to T line, turn anticlockwise the graduated knob.

### SOLENOID VALVE

2/2 NC solenoid valve is type EVC.34.04.0000 plus coil type :  
 C30-012C (V 12 DC)  
 C30-024C (V 24 DC)

This solenoid valve includes emergency manual override of screw type.

All dimensions are mm